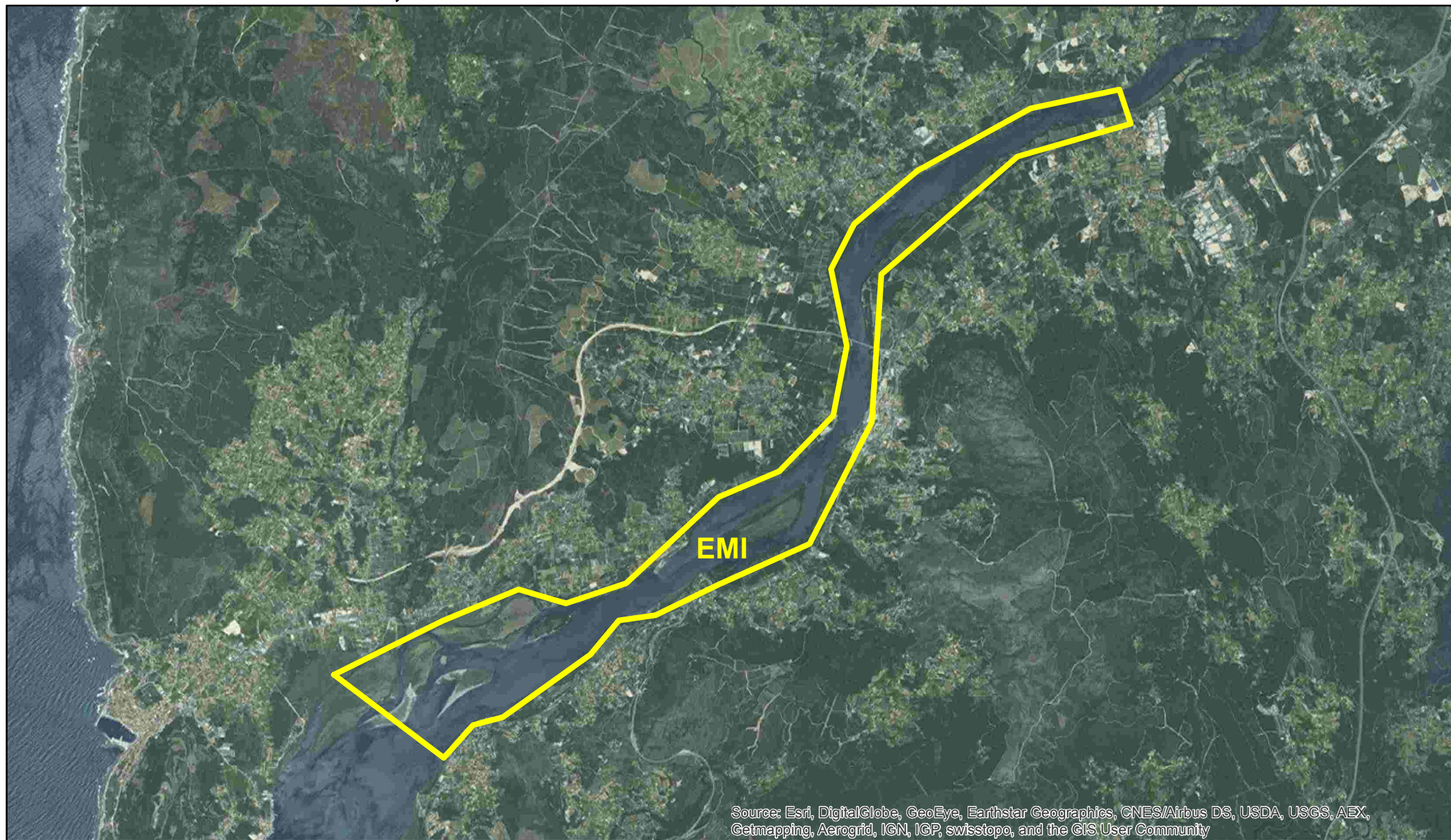


IMAGENS DOS LIMITES DAS ZDP ESTUARINO-LAGUNARES DOS MOLUSCOS BIVALVES

DE ACORDO COM O DESPACHO N° 4022/2015 DE 22 ABRIL DE 2015



EMI : Estuário do Rio Minho, Montante da Ponte Nova



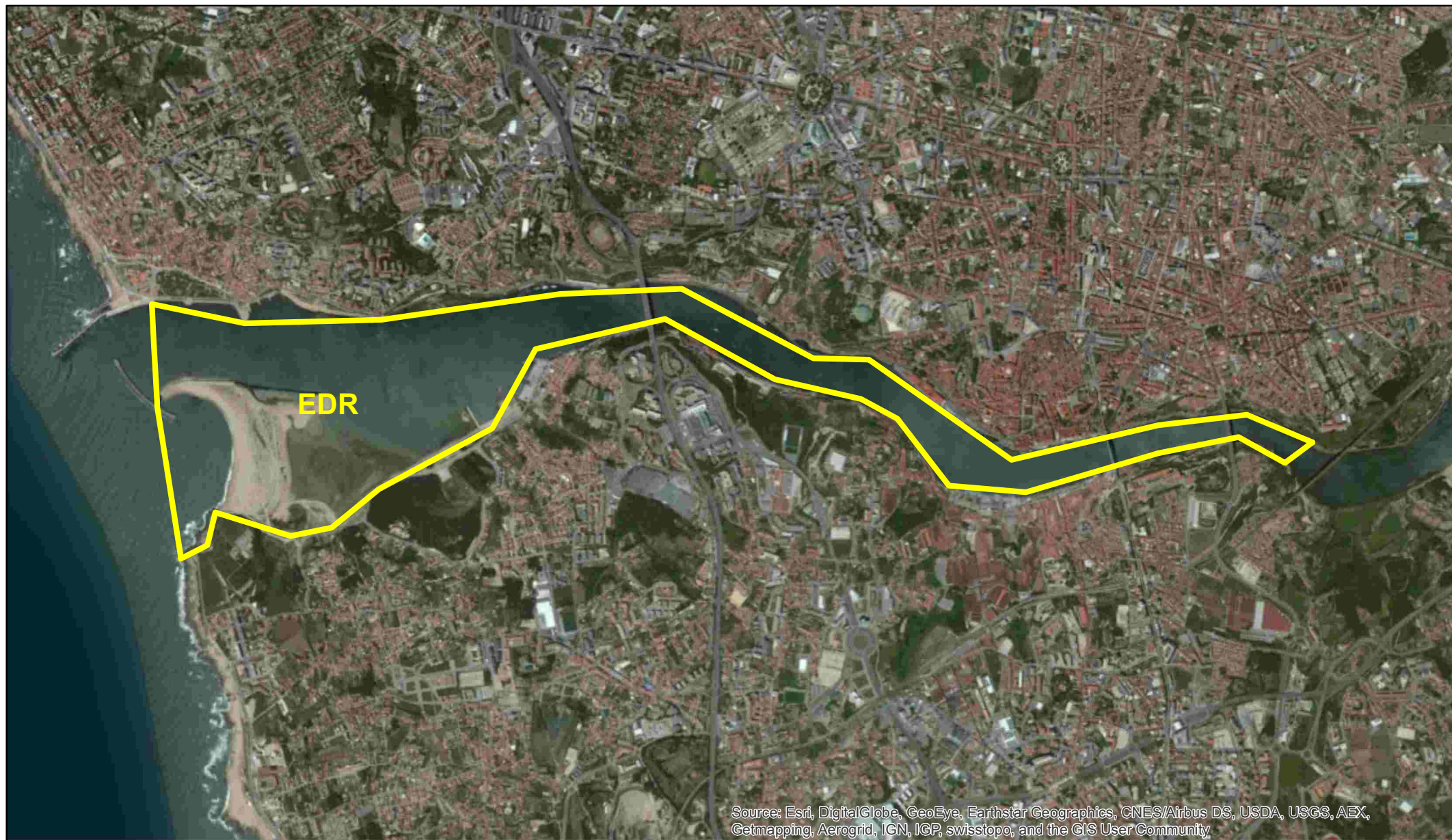
ELM : Estuário do Rio Lima, Jusante da Ponte do Rio Lima



Source: Esri, DigitalGlobe, GeoEye, Earthstar Geographics, CNES/Airbus DS, USDA, USGS, AEX, Getmapping, Aerogrid, IGN, IGP, swisstopo, and the GIS User Community



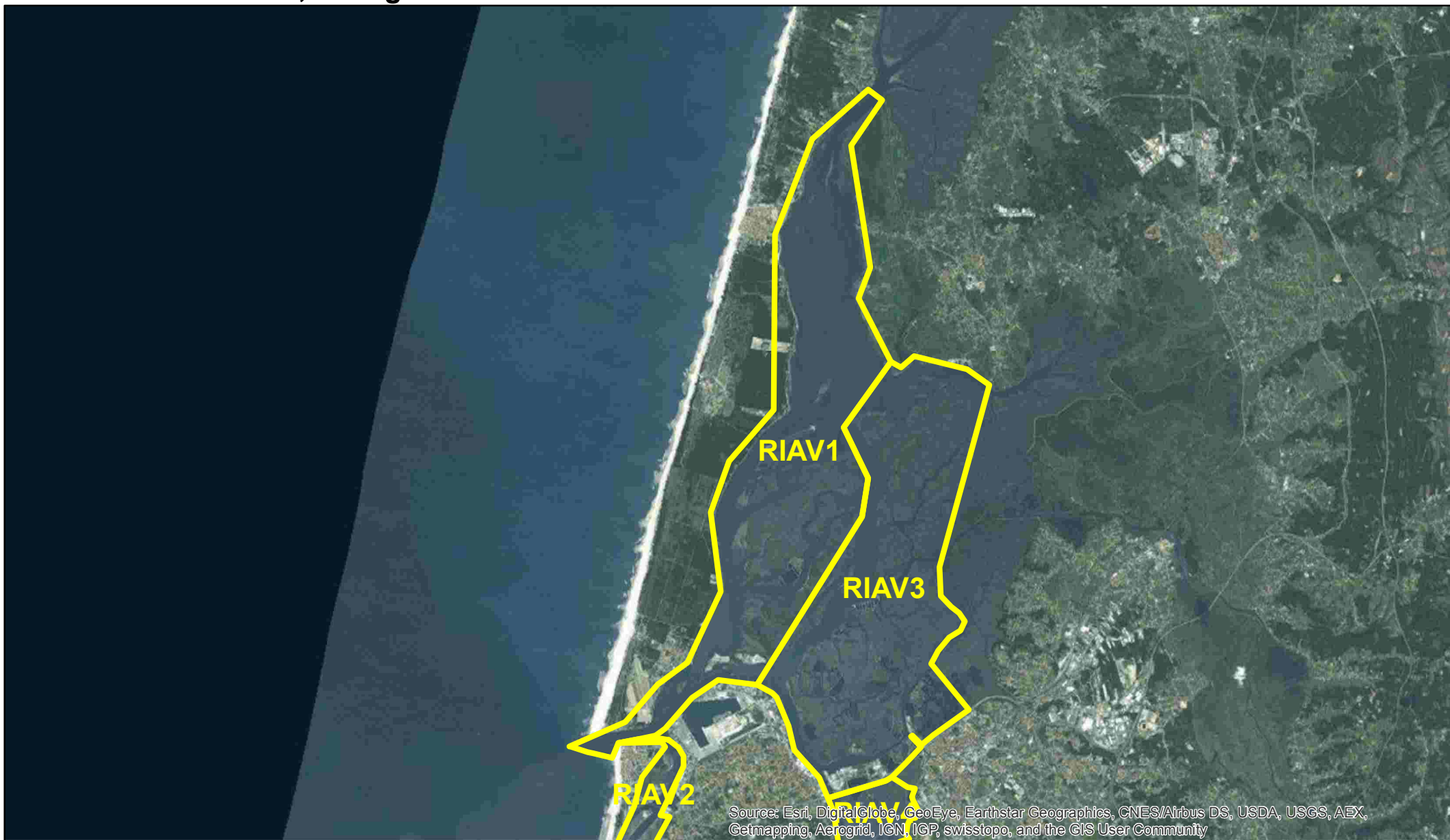
EDR : Estuário do Rio Douro



Source: Esri, DigitalGlobe, GeoEye, Earthstar Geographics, CNES/Airbus DS, USDA, USGS, AEX, Getmapping, Aerogrid, IGN, IGP, swisstopo, and the GIS User Community



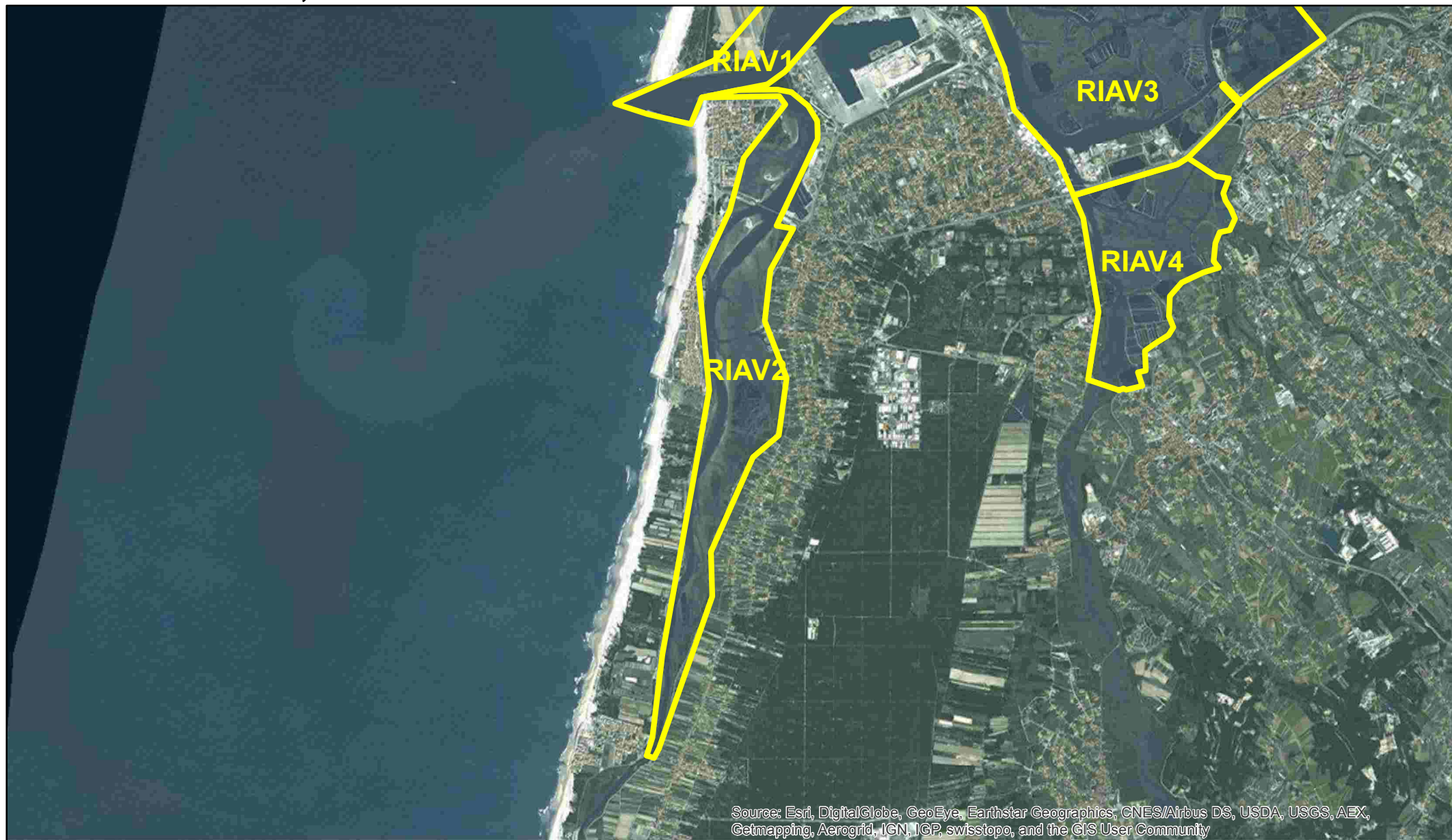
RIAV1 : Ria de Aveiro, Triângulo das Correntes — Moacha



Source: Esri, DigitalGlobe, GeoEye, Earthstar Geographics, CNES/Airbus DS, USDA, USGS, AEX, Getmapping, Aerogrid, IGN, IGP, swisstopo, and the GIS User Community



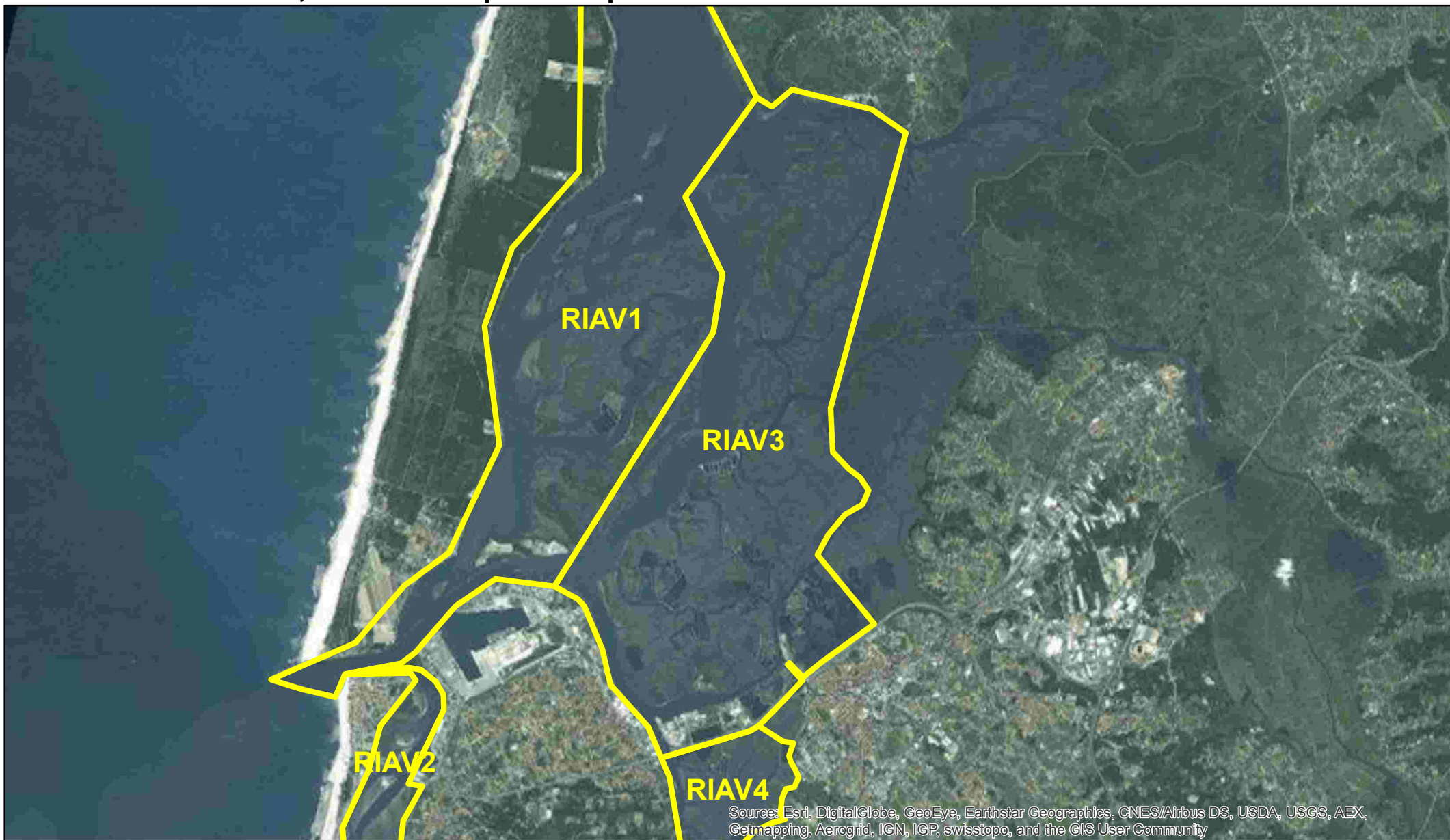
RIAV2 : Ria de Aveiro, Canal de Mira



Source: Esri, DigitalGlobe, GeoEye, Earthstar Geographics, CNES/Airbus DS, USDA, USGS, AEX, Getmapping, Aerogrid, IGN, IGP, swisstopo, and the GIS User Community



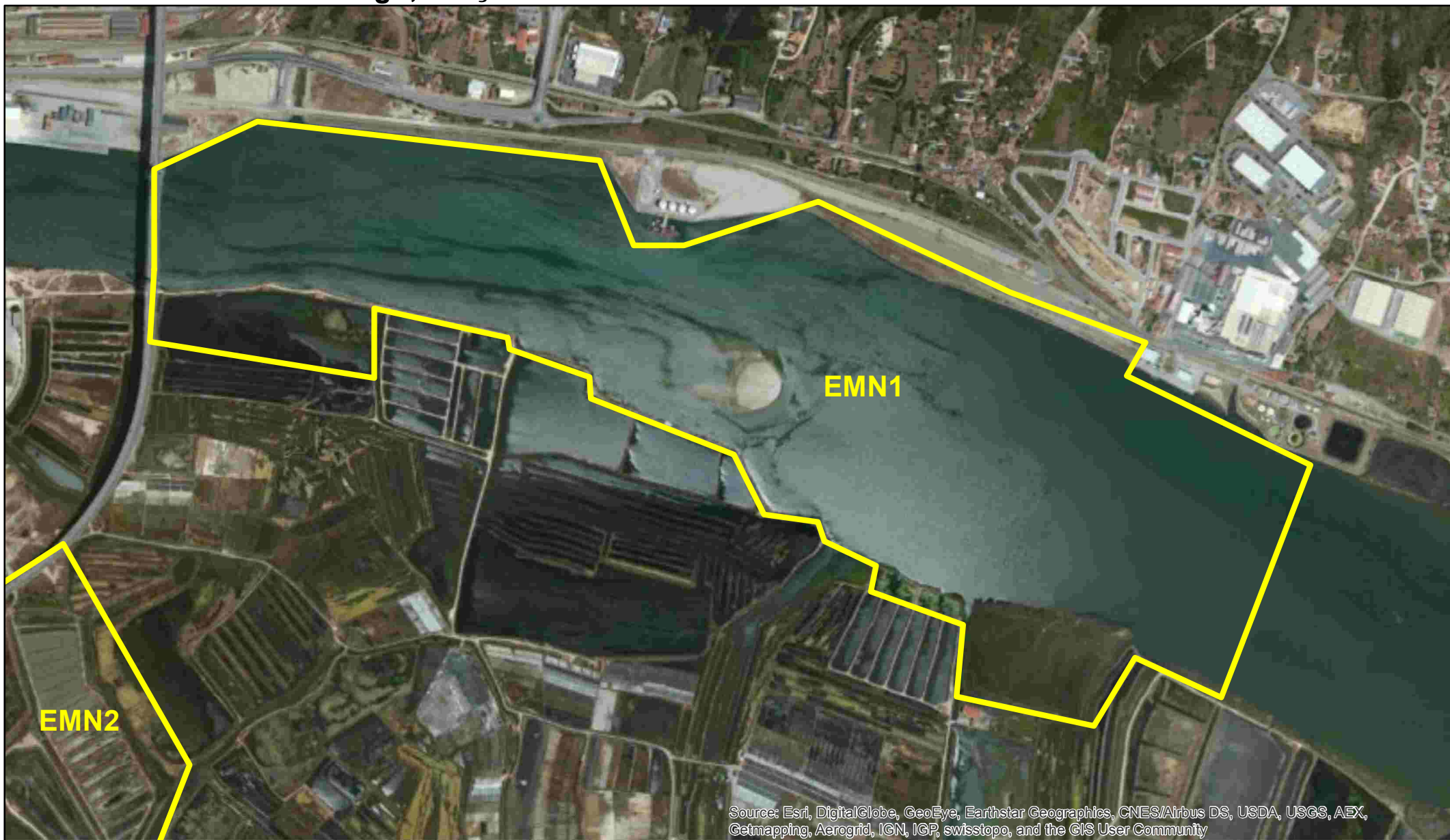
RIAV3 : Ria de Aveiro, Canal Principal — Espinheiro



RIAV4 : Ria de Aveiro, Canal de Ílhavo



EMN1 : Estuário do Mondego, Braço Norte



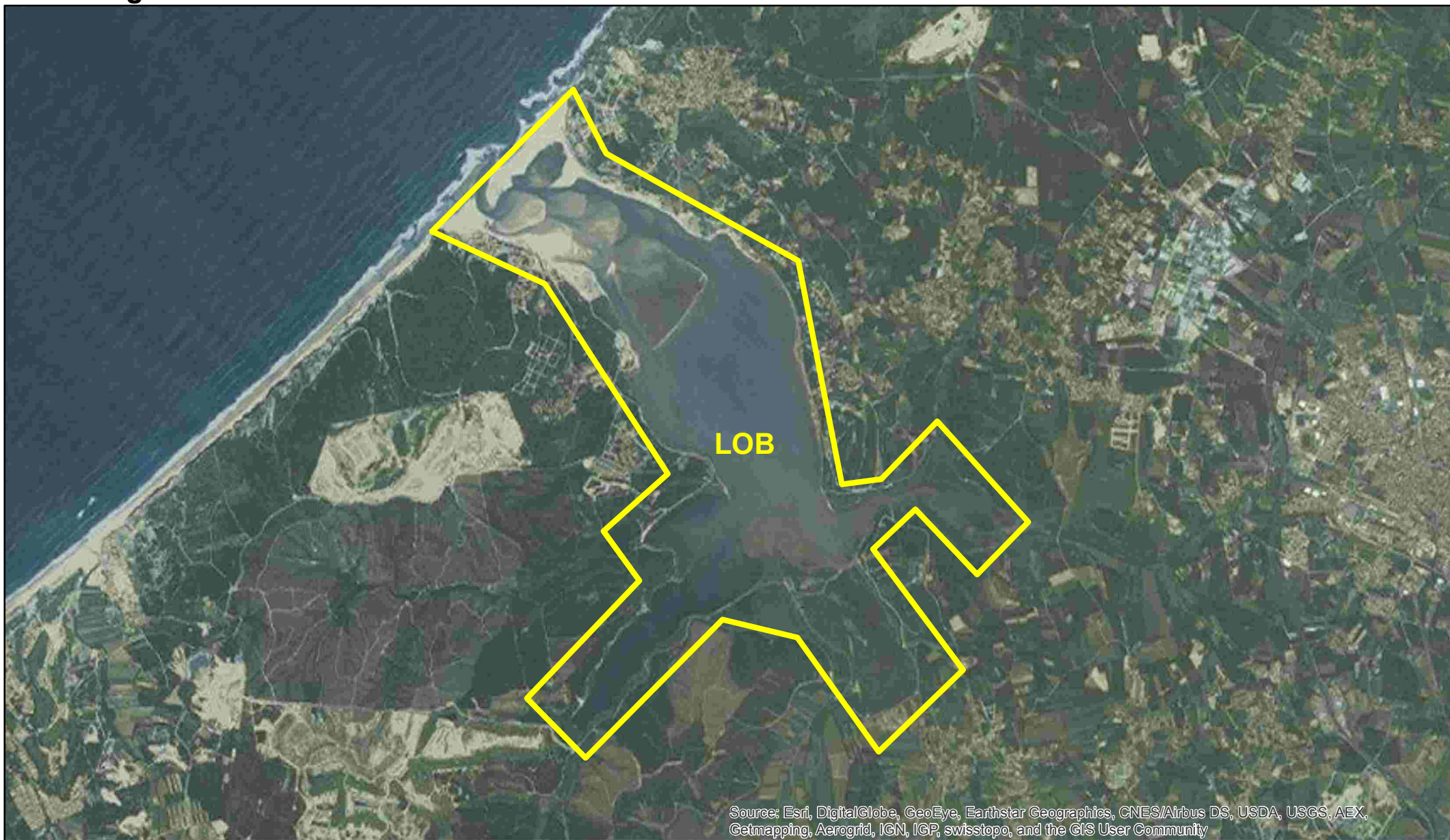
Source: Esri, DigitalGlobe, GeoEye, Earthstar Geographics, CNES/Airbus DS, USDA, USGS, AEX, Getmapping, Aerogrid, IGN, IGP, swisstopo, and the GIS User Community



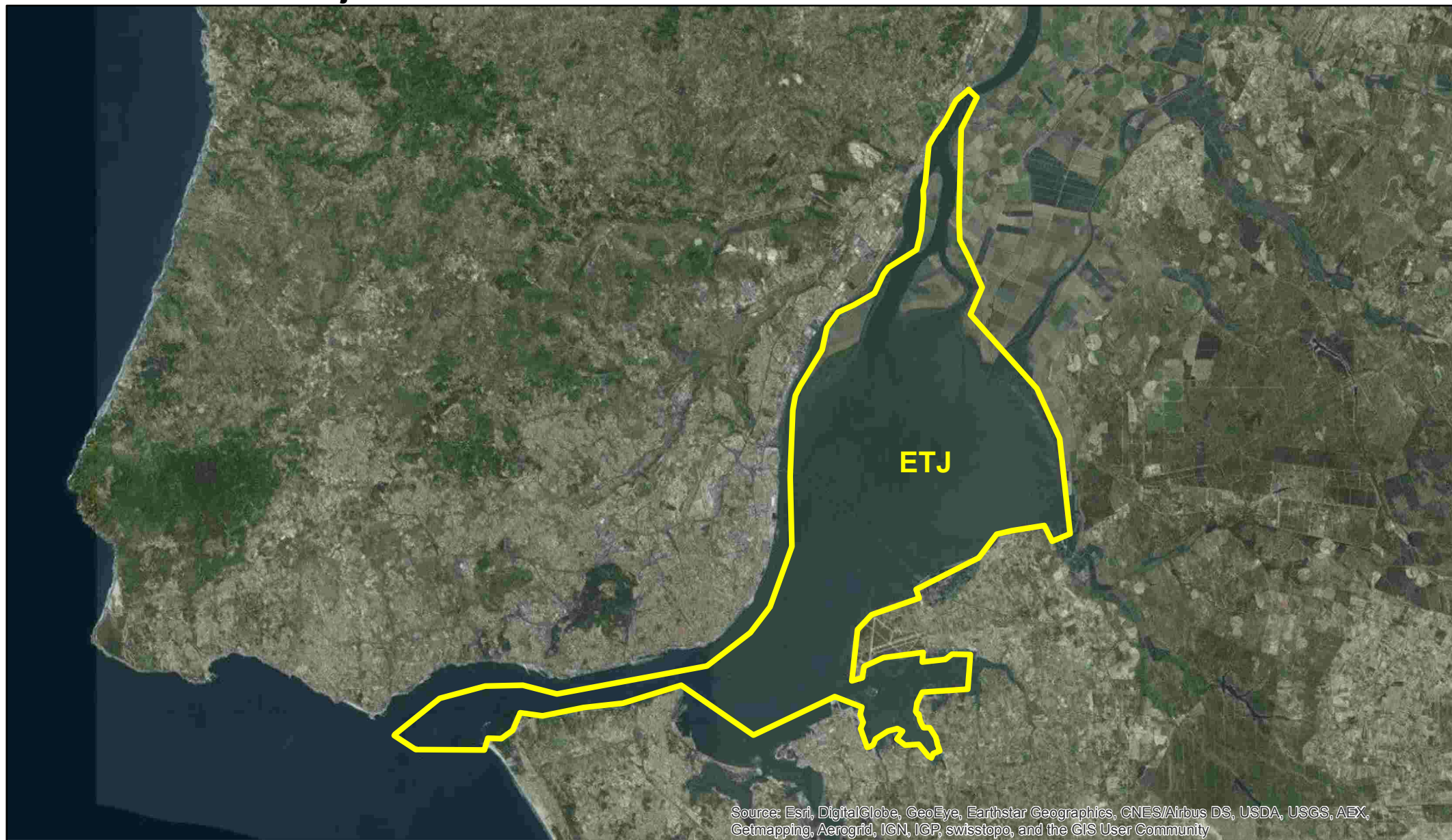
EMN2 : Estuário do Mondego, Braço Sul



LOB : Lagoa de Óbidos



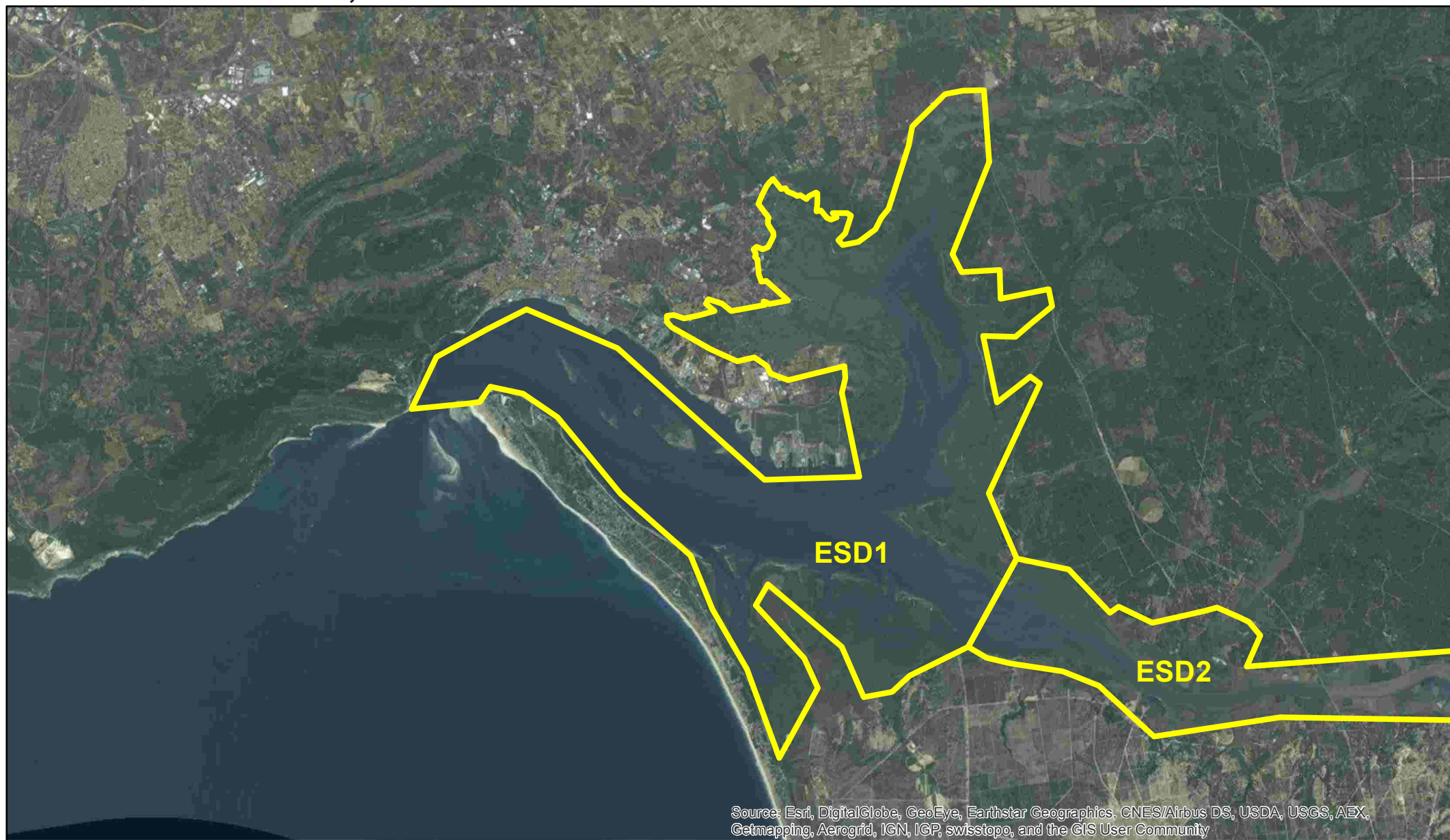
ETJ : Estuário do Rio Tejo



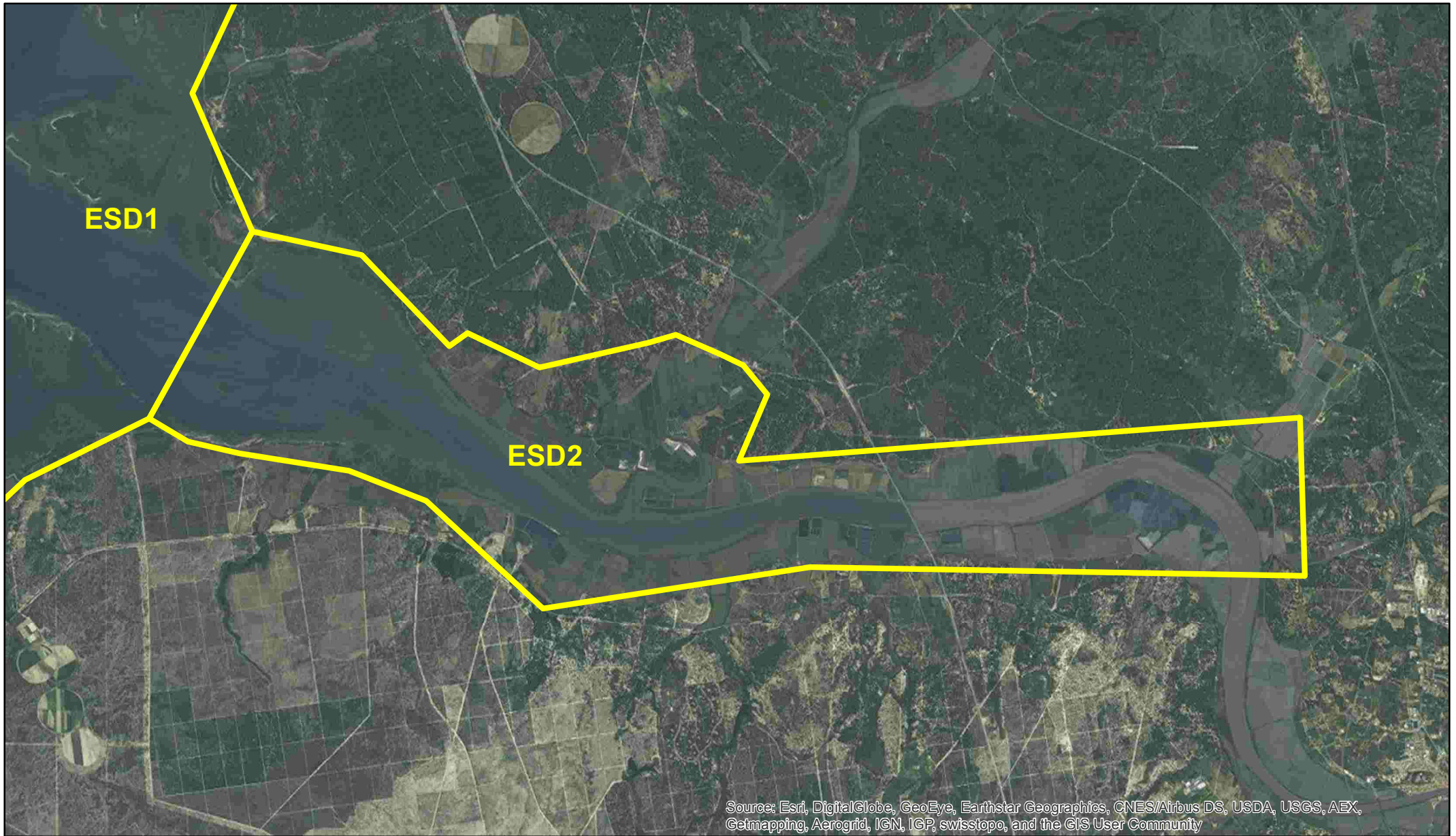
LAL : Lagoa de Albufeira



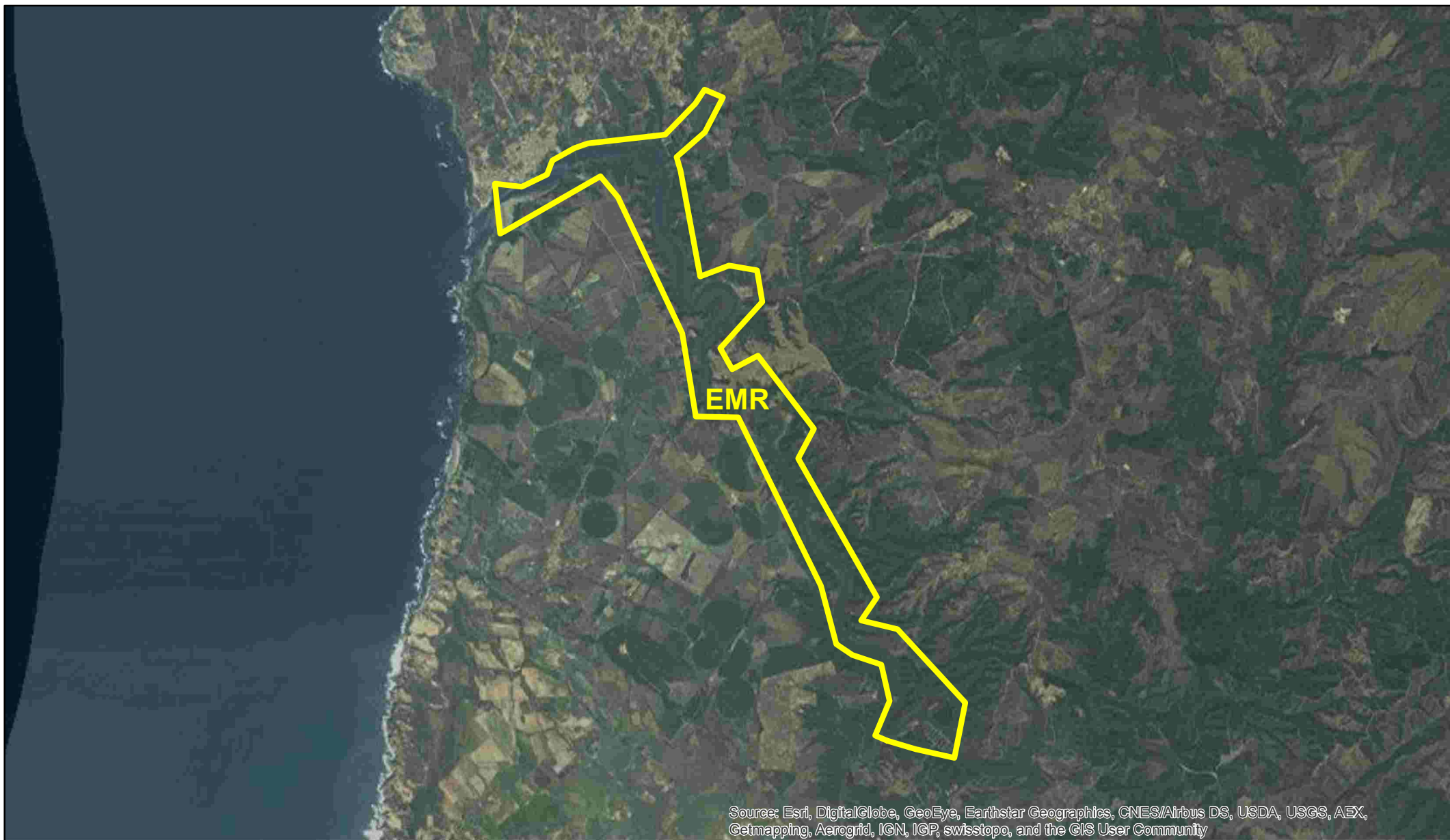
ESD1 : Estuário do Sado, Esteiro da Marateca



ESD2 : Estuário do Sado, Canal de Alcácer



EMR : Estuário do Rio Mira



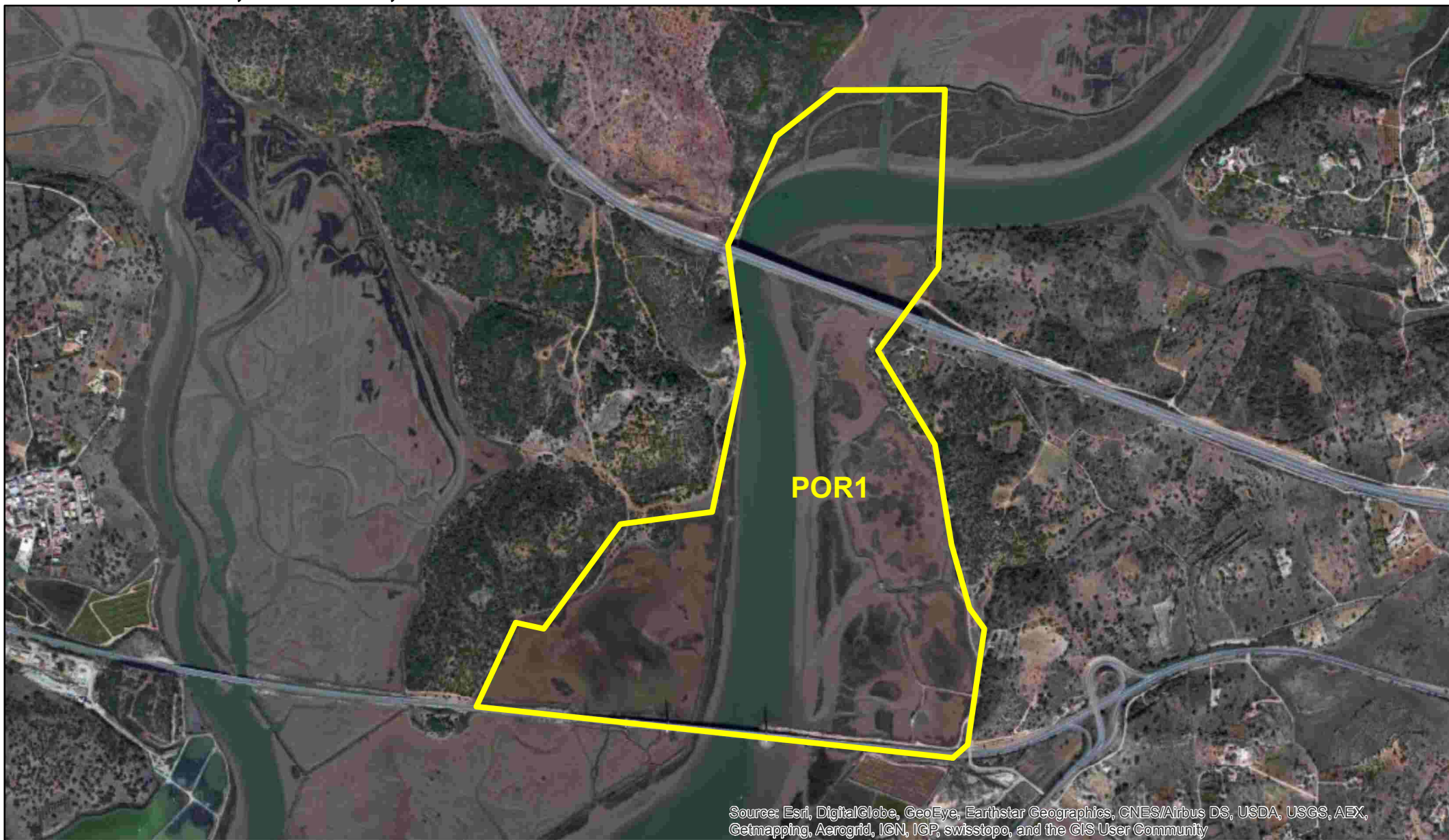
Source: Esri, DigitalGlobe, GeoEye, Earthstar Geographics, CNES/Airbus DS, USDA, USGS, AEX, Getmapping, Aerogrid, IGN, IGP, swisstopo, and the GIS User Community



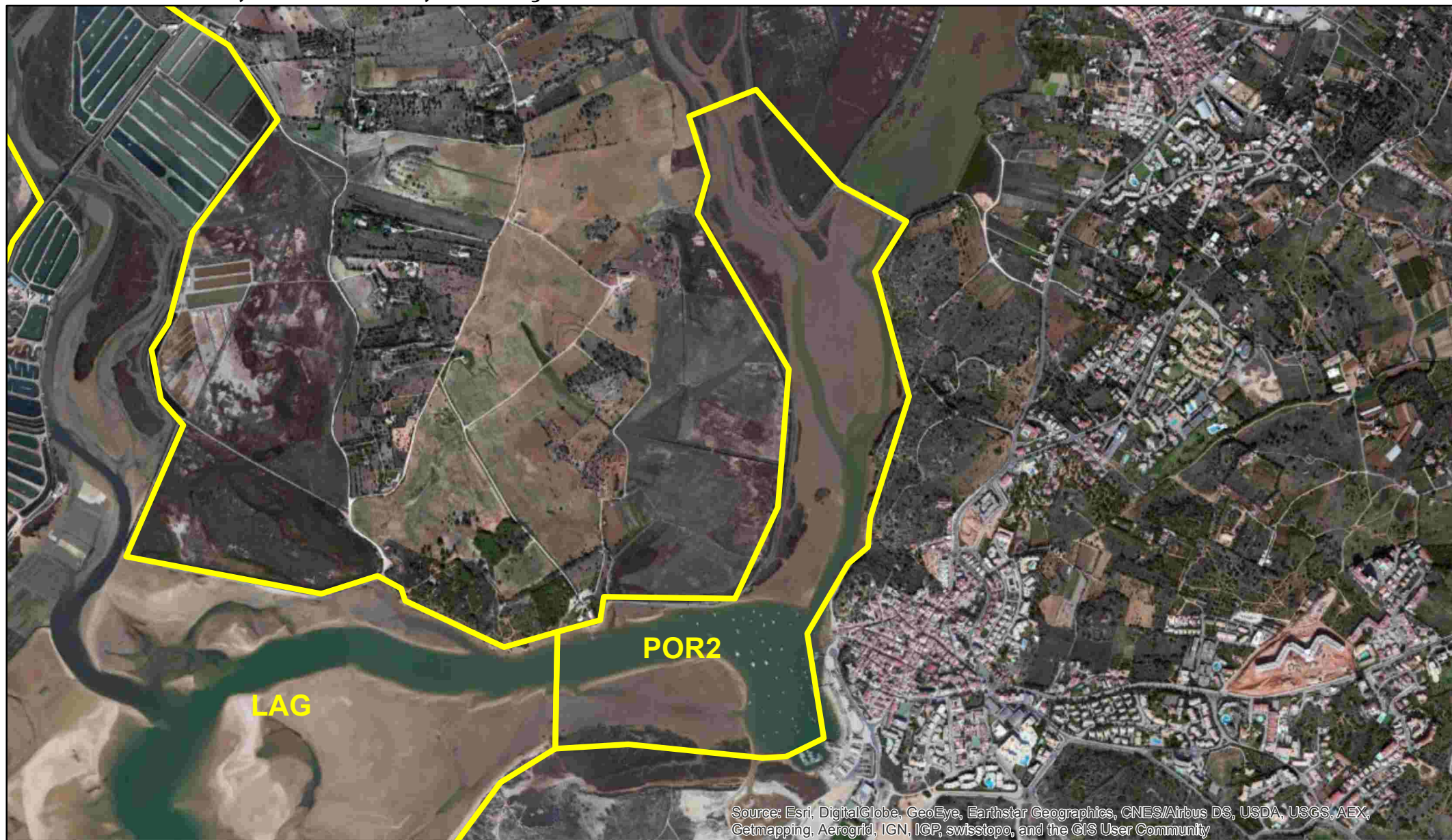
LAG : Lagos, Ria do Alvor, Vale da Lama



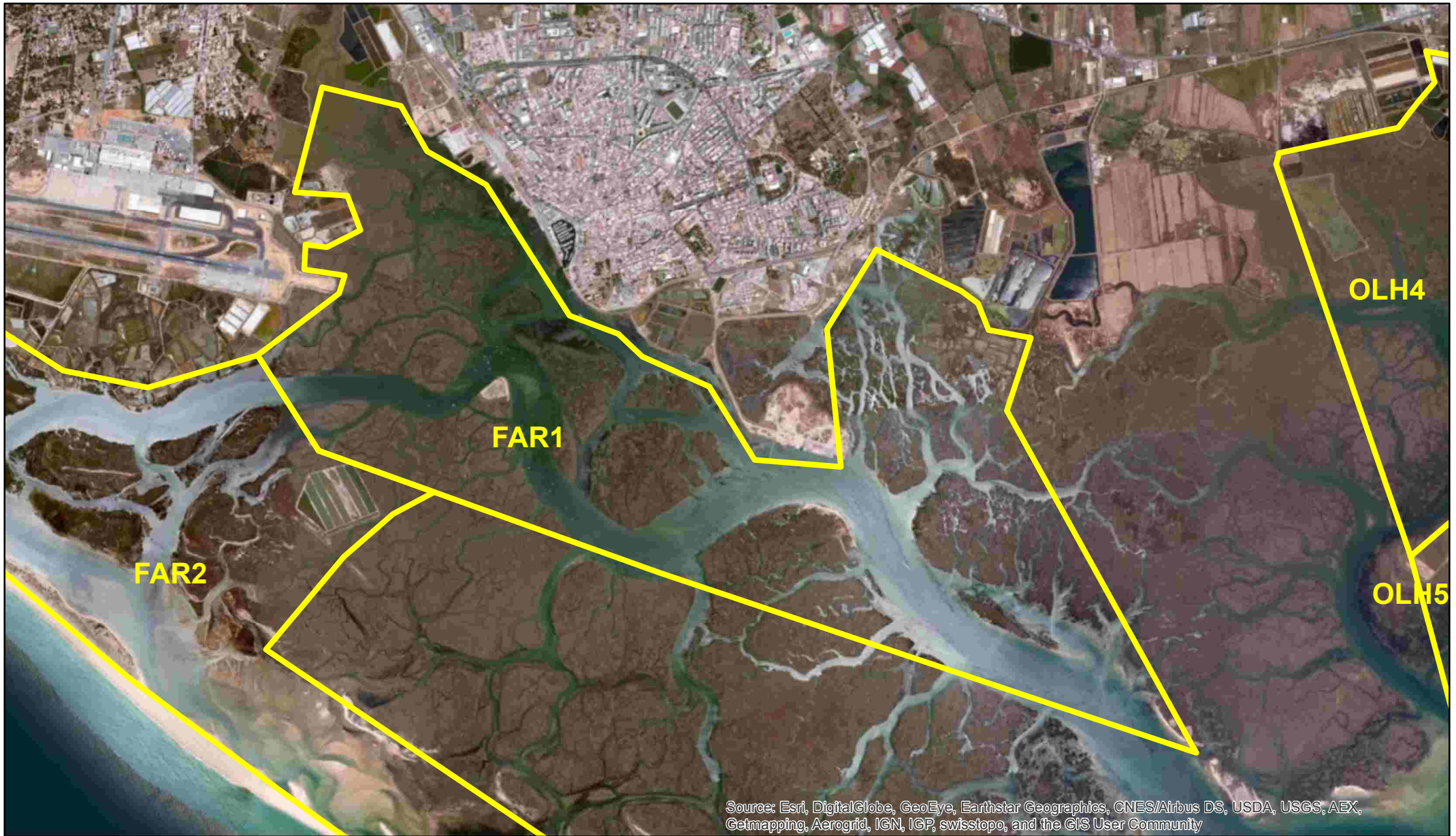
POR1 : Portimão, Rio Arade, Montante da Ponte Nova



POR2 : Portimão, Ria do Alvor, Povoação



FAR1 : Ria Formosa, Faro, Cais Novo — Geada



Source: Esri, DigitalGlobe, GeoEye, Earthstar Geographics, CNES/Airbus DS, USDA, USGS, AEX, Getmapping, Aerogrid, IGN, IGP, swisstopo, and the GIS User Community



FAR2 : Ria Formosa, Faro, Regato de Azeites — Barrinha



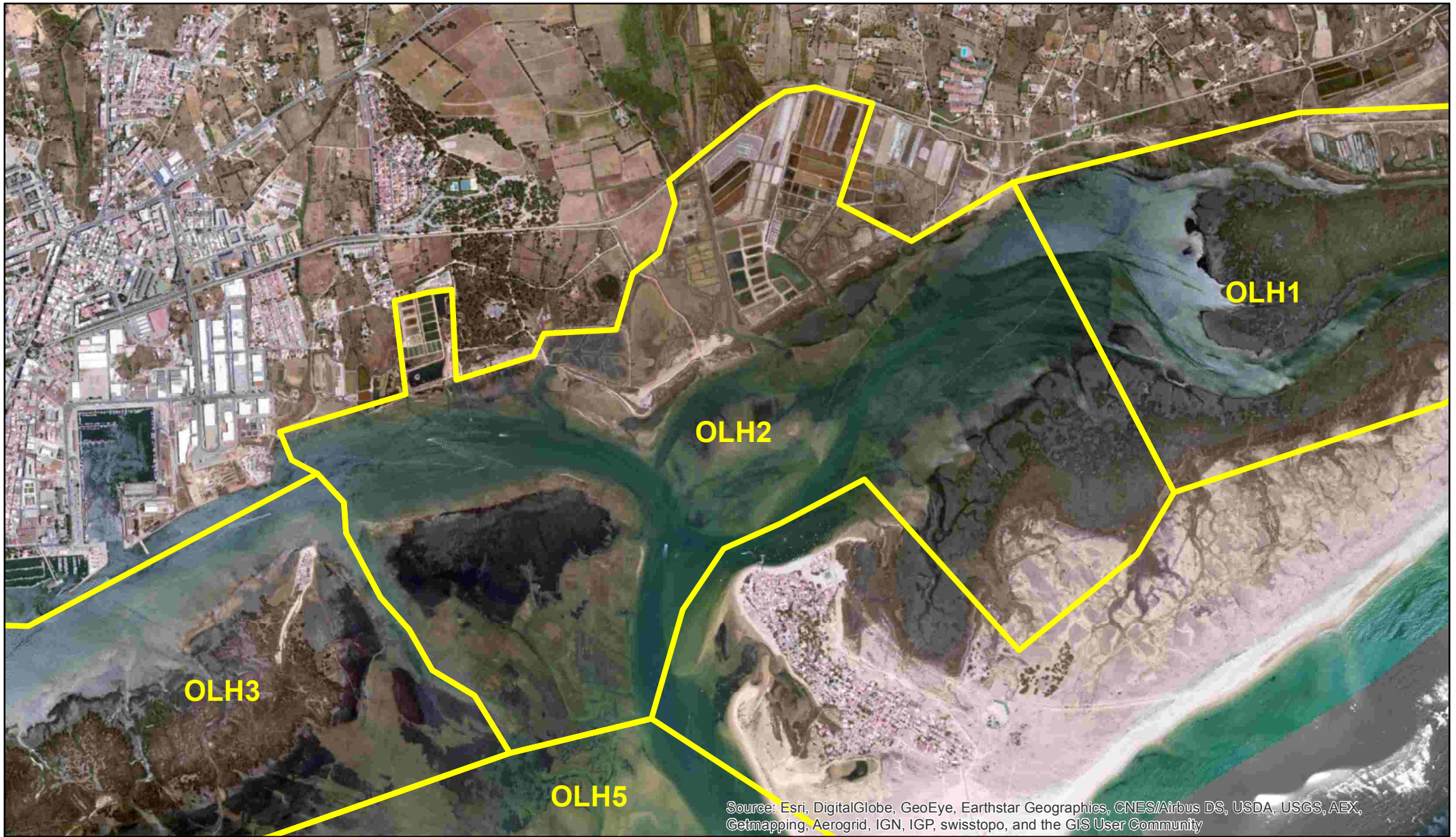
OLH1 : Ria Formosa, Olhão, Regueira de Água Quente — Alto da Farroba



Source: Esri, DigitalGlobe, GeoEye, Earthstar Geographics, CNES/Airbus DS, USDA, USGS, AEX, Getmapping, Aerogrid, IGN, IGP, swisstopo, and the GIS User Community



OLH2 : Ria Formosa, Olhão, Barrinha — Marim



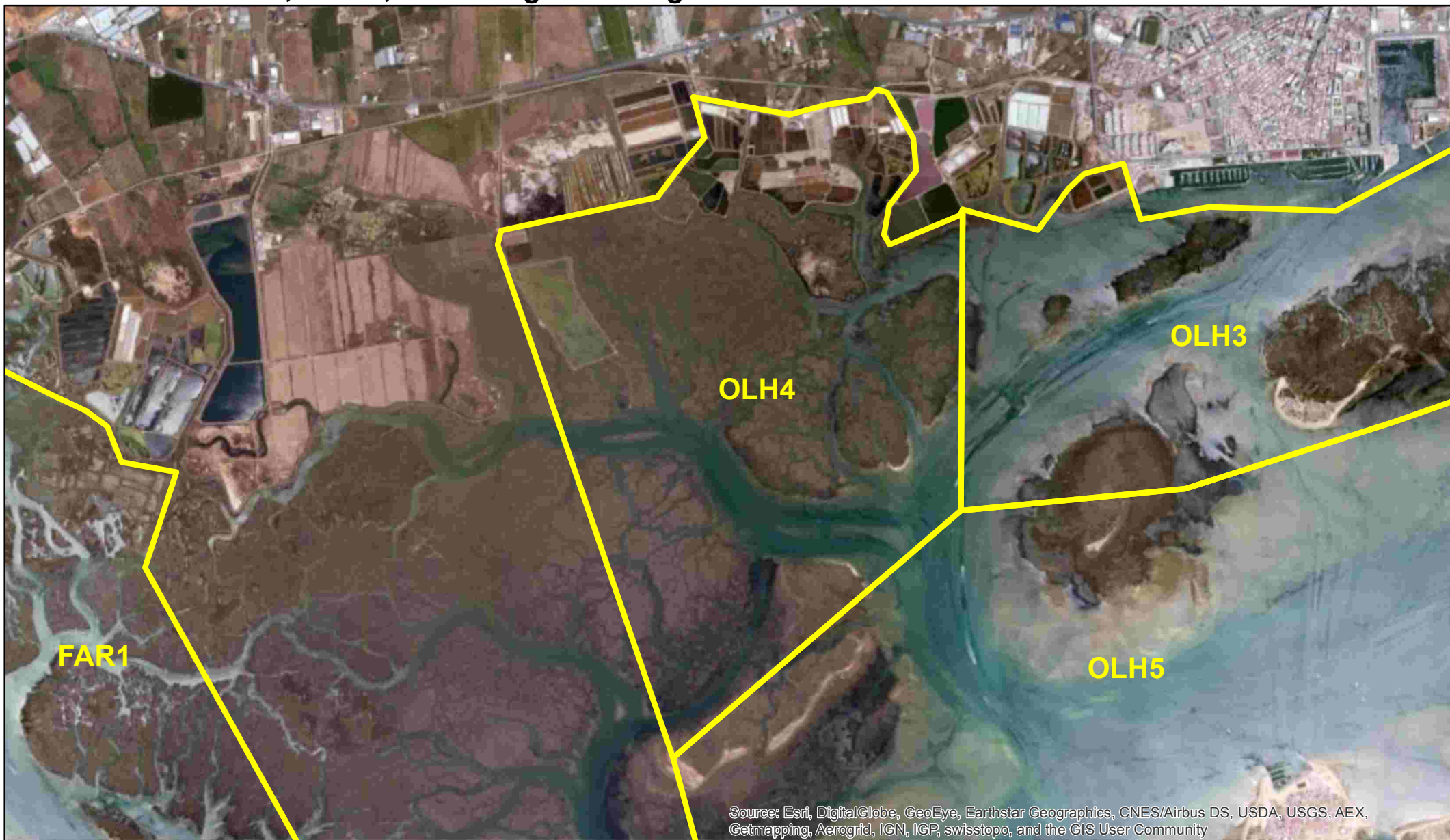
OLH3 : Ria Formosa, Olhão, Fortaleza — Areais



Source: Esri, DigitalGlobe, GeoEye, Earthstar Geographics, CNES/Airbus DS, USDA, USGS, AEX, Getmapping, Aerogrid, IGN, IGP, swisstopo, and the GIS User Community



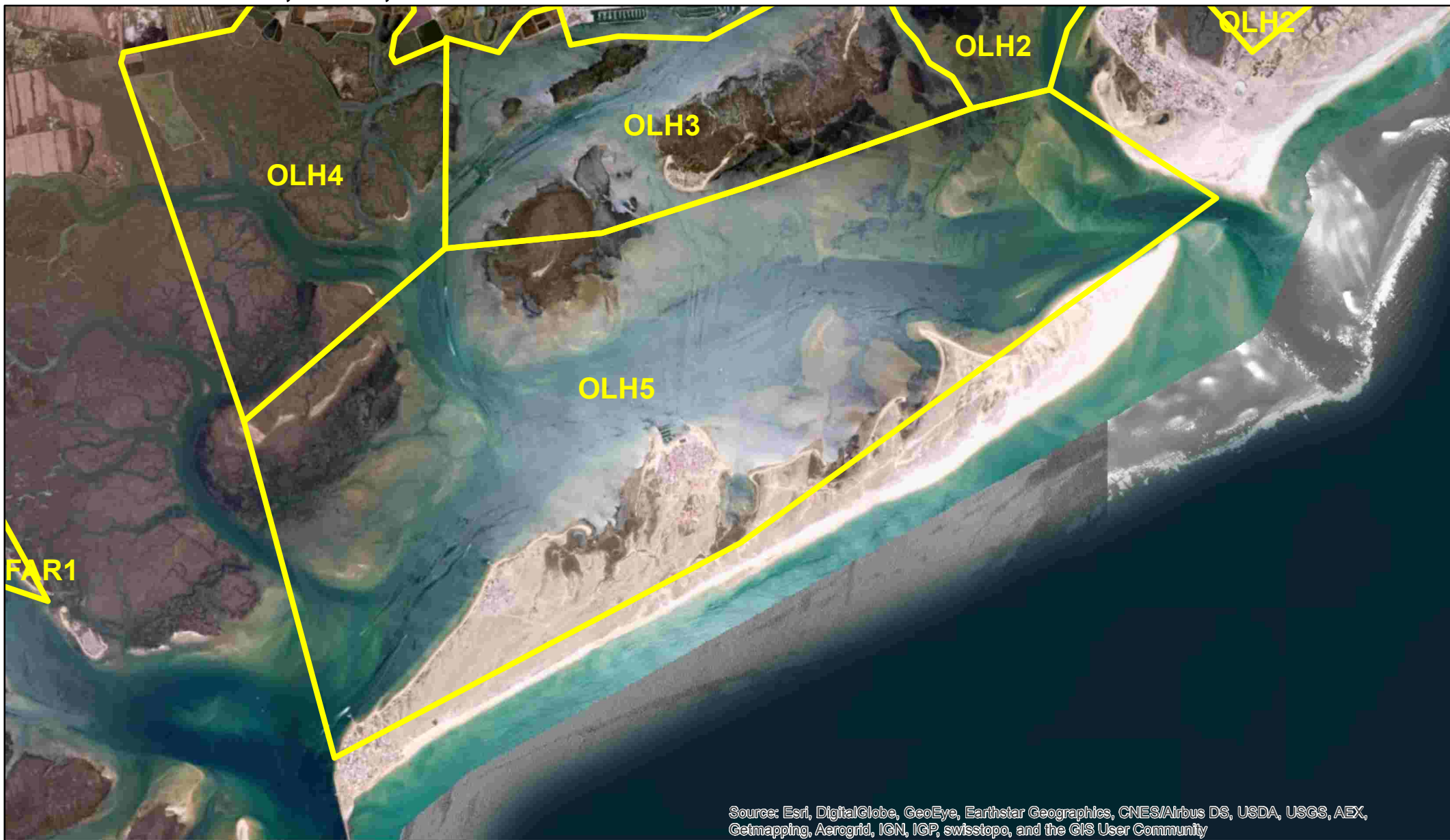
OLH4 : Ria Formosa, Olhão, Ilhote Negro — Garganta



Source: Esri, DigitalGlobe, GeoEye, Earthstar Geographics, CNES/Airbus DS, USDA, USGS, AEX, Getmapping, Aerogrid, IGN, IGP, swisstopo, and the GIS User Community



OLH5 : Ria Formosa, Olhão, Lameirão — Culatra



Source: Esri, DigitalGlobe, GeoEye, Earthstar Geographics, CNES/Airbus DS, USDA, USGS, AEX, Getmapping, Aerogrid, IGN, IGP, swisstopo, and the GIS User Community

FUZ1 : Ria Formosa, Fuzeta, Murteira — Ilha da Fuzeta



TAV2 : Ria Formosa, Tavira, Quatro-Águas — Torre d'Aires



VT1 : Ria Formosa, Cacela — Fábrica



Source: Esri, DigitalGlobe, GeoEye, Earthstar Geographics, CNES/Airbus DS, USDA, USGS, AEX, Getmapping, Aerogrid, IGN, IGP, swisstopo, and the GIS User Community

