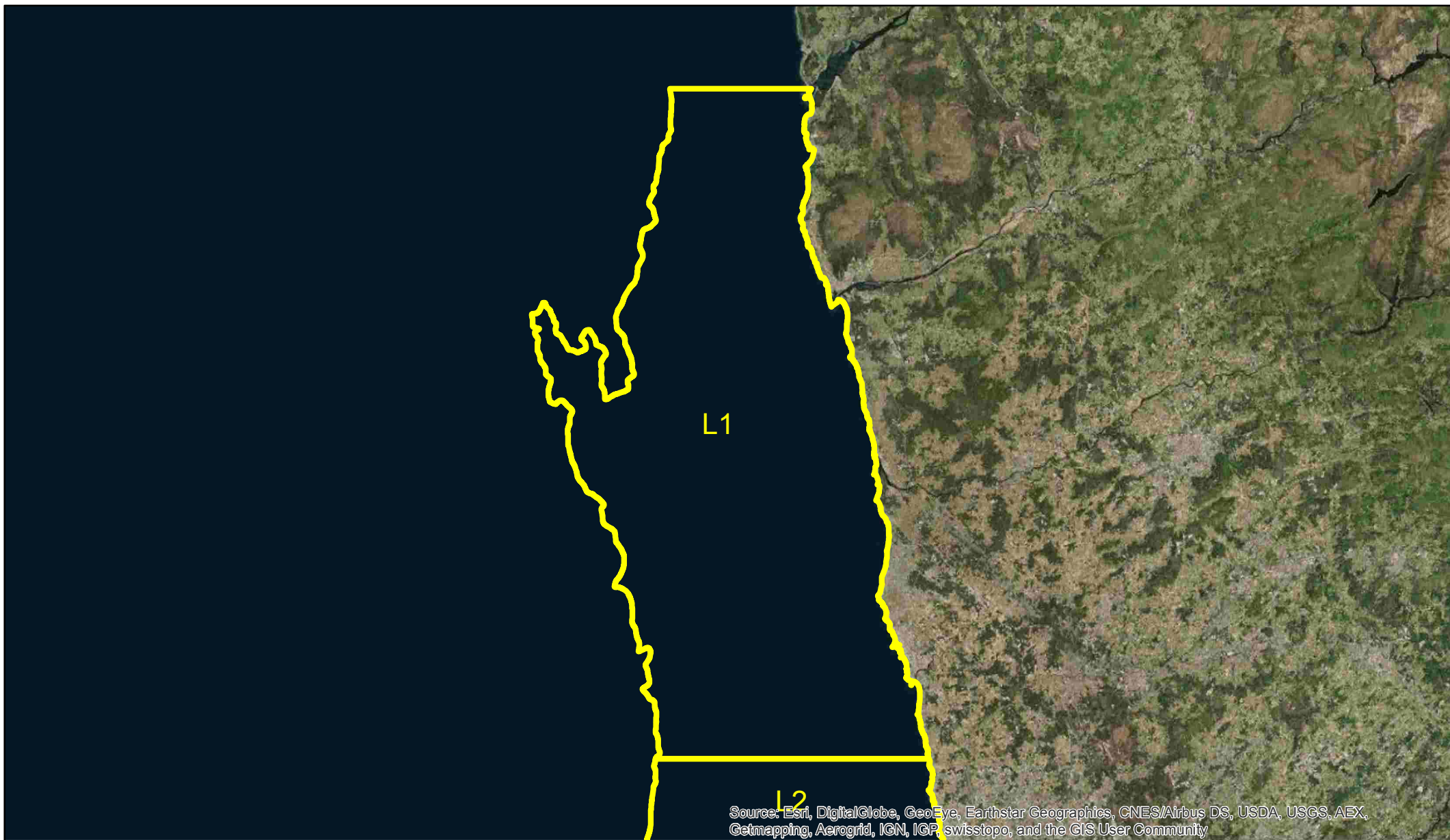


# **IMAGENS DOS LIMITES DAS ZDP LITORIAIS DOS MOLUSCOS BIVALVES**

**DE ACORDO COM O DESPACHO N° 4022/2015 DE 22 ABRIL DE 2015**



# L1 : Litoral Viana

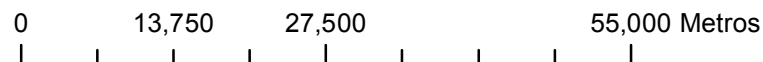


Source: Esri, DigitalGlobe, GeoEye, Earthstar Geographics, CNES/Airbus DS, USDA, USGS, AEX, Getmapping, Aerogrid, IGN, IGP, swisstopo, and the GIS User Community

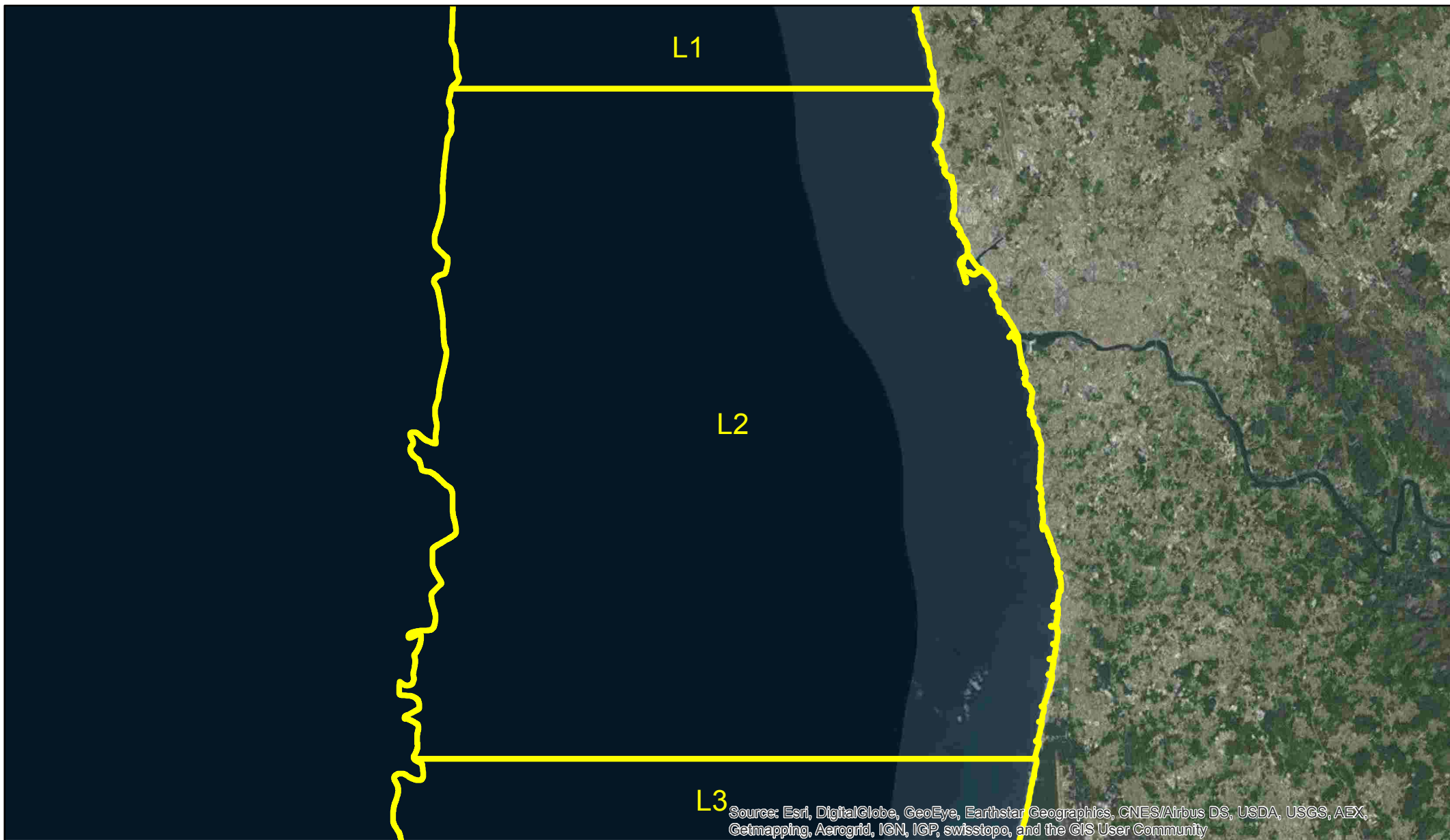


Coordinate System: WGS 1984 World Mercator  
Projection: Mercator  
Datum: WGS 1984  
False Easting: 0.0000  
False Northing: 0.0000  
Central Meridian: 0.0000  
Standard Parallel 1: 0.0000  
Units: Meter

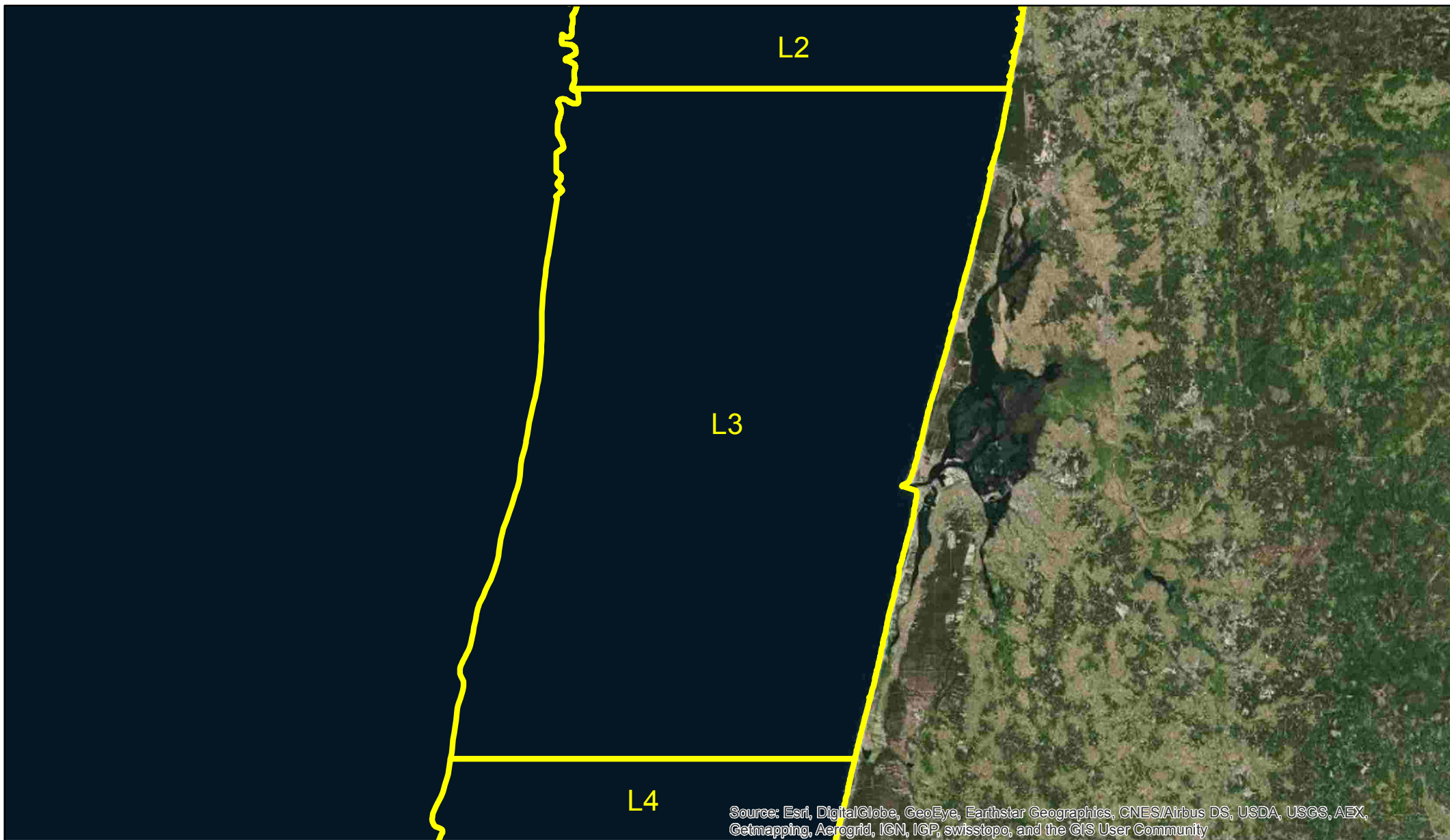
Imagem para uso exclusivo do IPMA



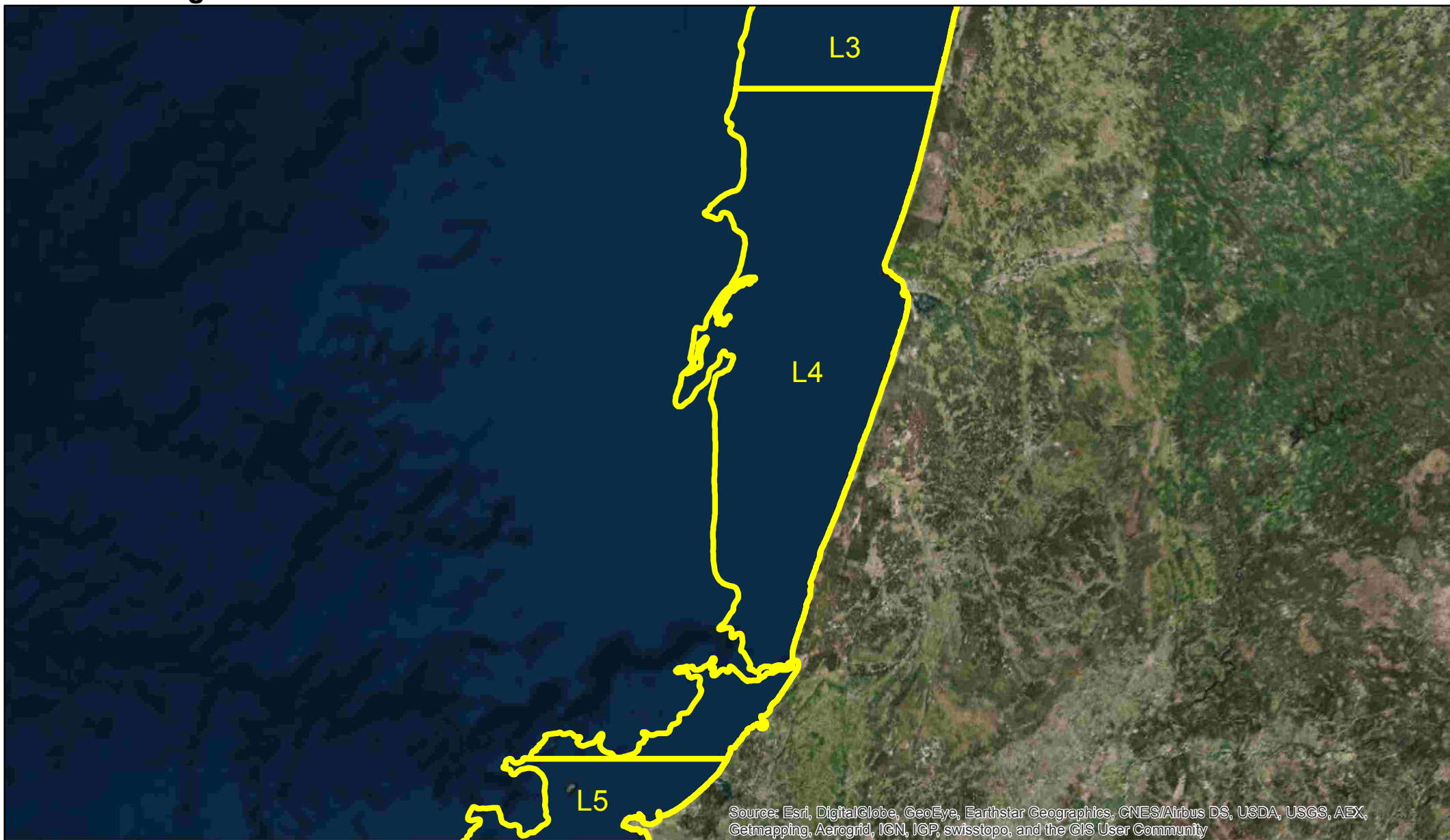
## L2 : Litoral Matosinhos



### L3 : Litoral Aveiro



## L4 : Litoral Figueira da Foz - Nazaré



## L5 : Litoral Peniche - Lisboa



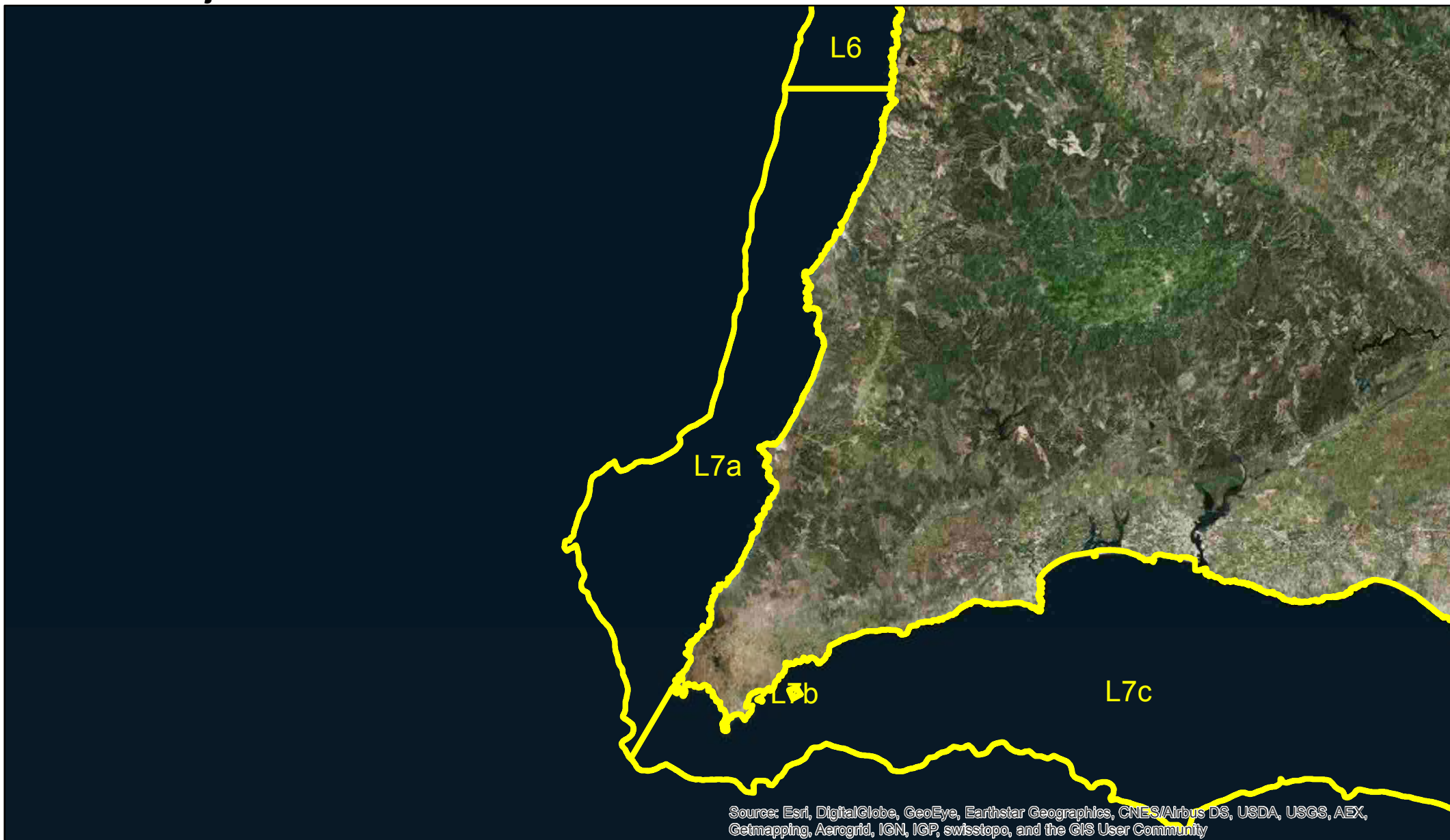
## L6 : Litoral Setúbal - Sines



Source: Esri, DigitalGlobe, GeoEye, Earthstar Geographics, CNES/Airbus DS, USDA, USGS, AEX, Getmapping, Aerogrid, IGN, IGP, swisstopo, and the GIS User Community

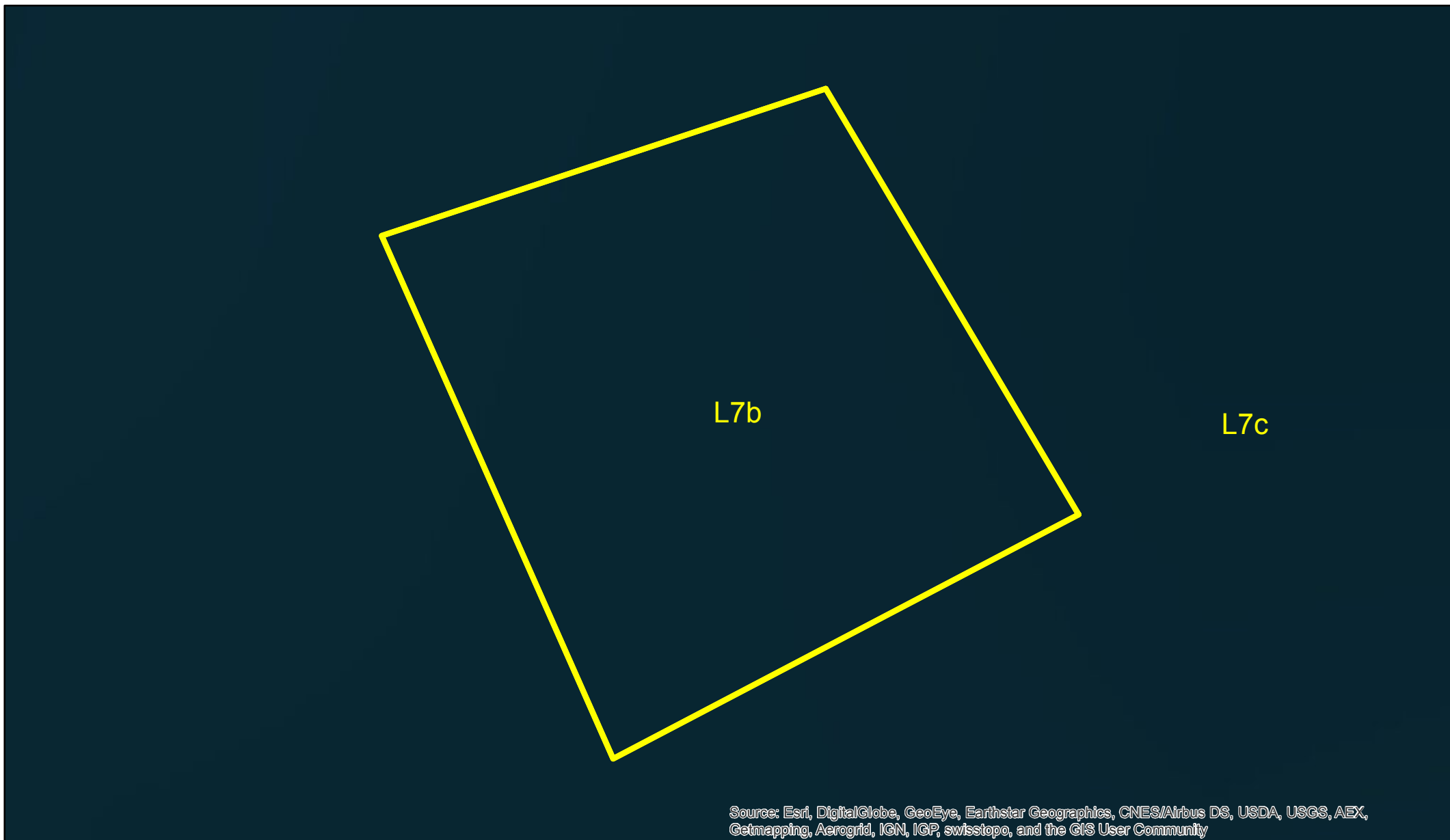


## L7a : Litoral Aljezur - S. Vicente





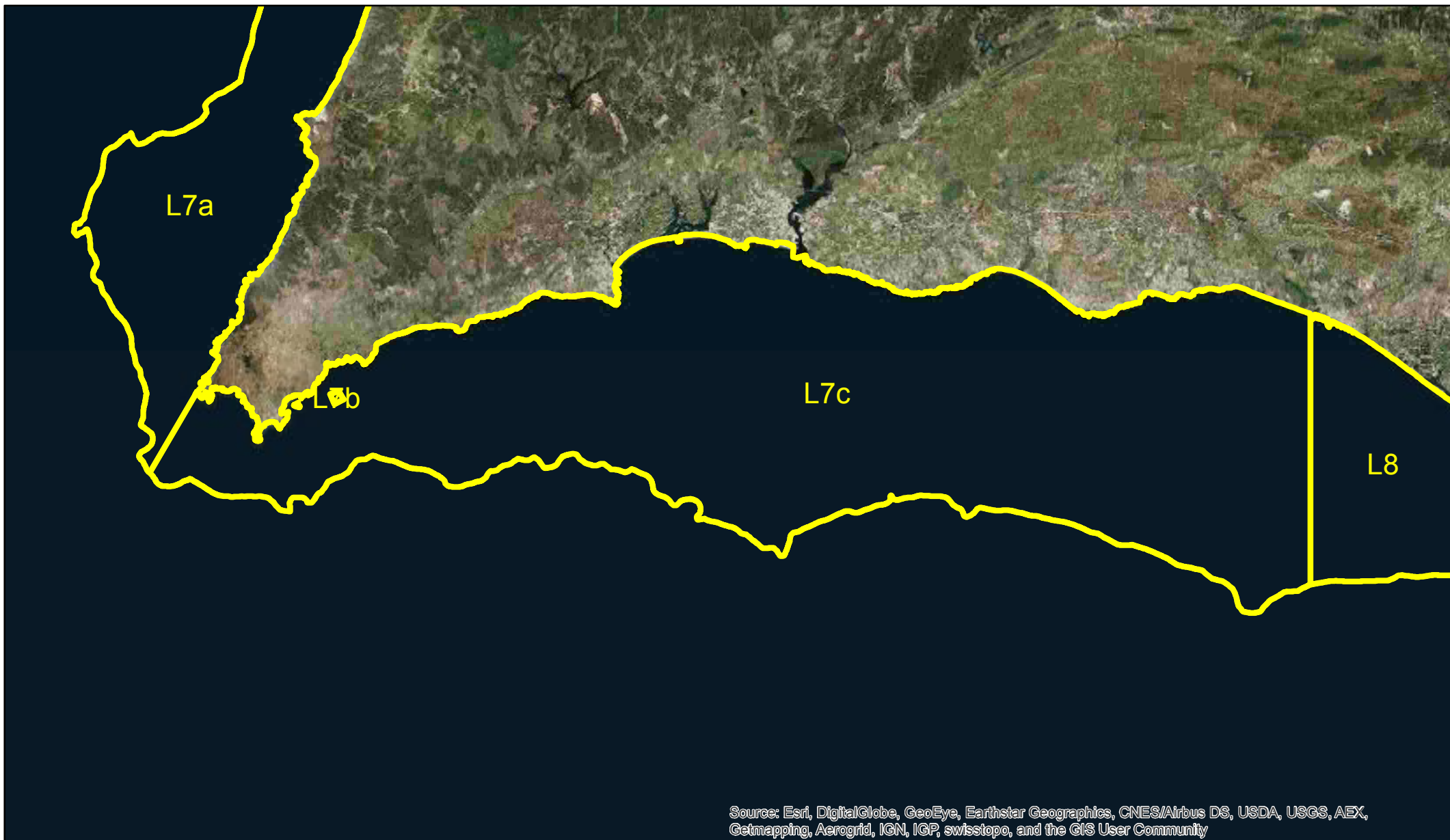
## L7b : Litoral Offshore



Source: Esri, DigitalGlobe, GeoEye, Earthstar Geographics, CNES/Airbus DS, USDA, USGS, AEX, Getmapping, Aerogrid, IGN, IGP, swisstopo, and the GIS User Community

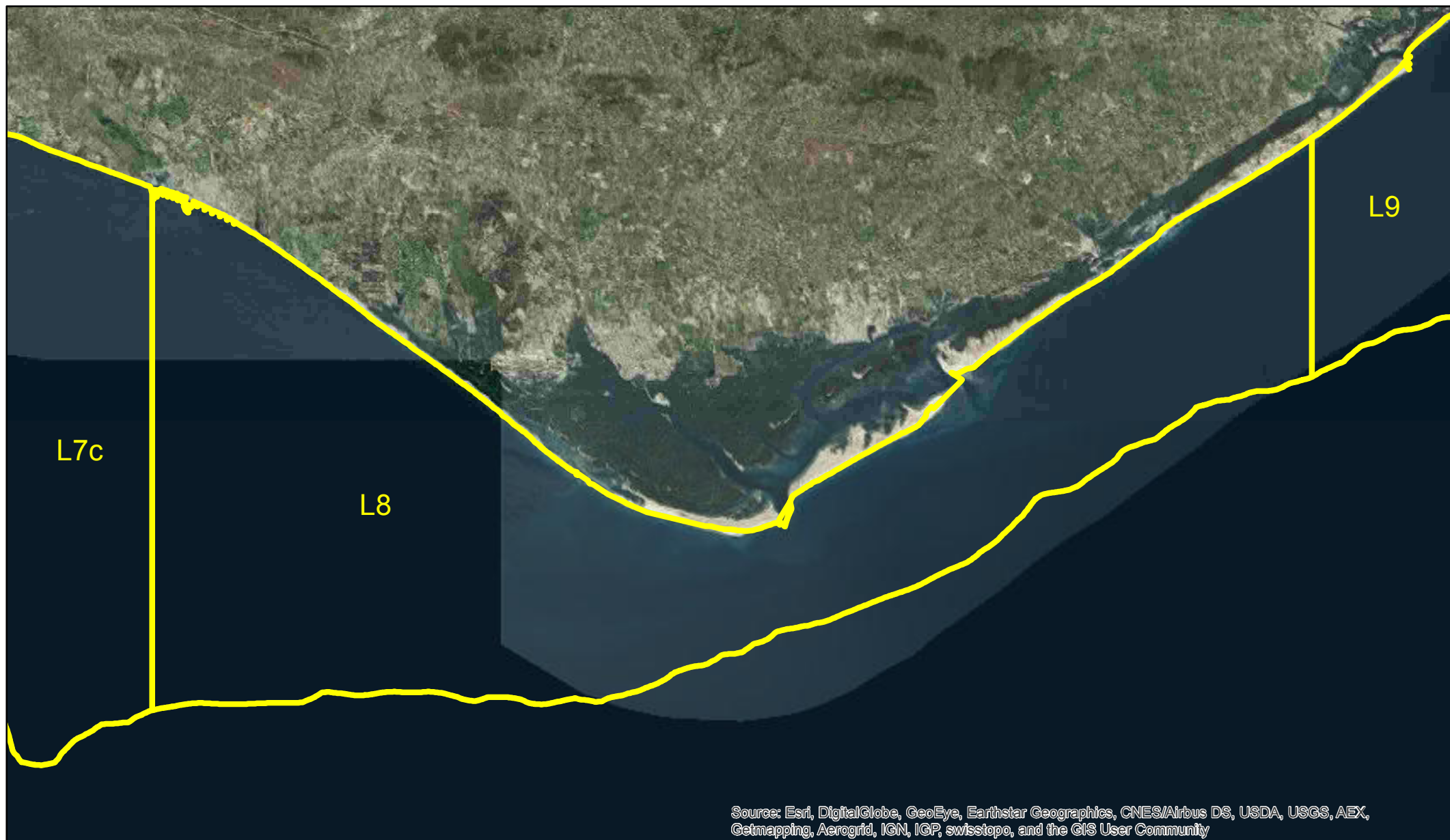


### L7c : Litoral S. Vicente - Portimão



Source: Esri, DigitalGlobe, GeoEye, Earthstar Geographics, CNES/Airbus DS, USDA, USGS, AEX, Getmapping, Aerogrid, IGN, IGP, swisstopo, and the GIS User Community

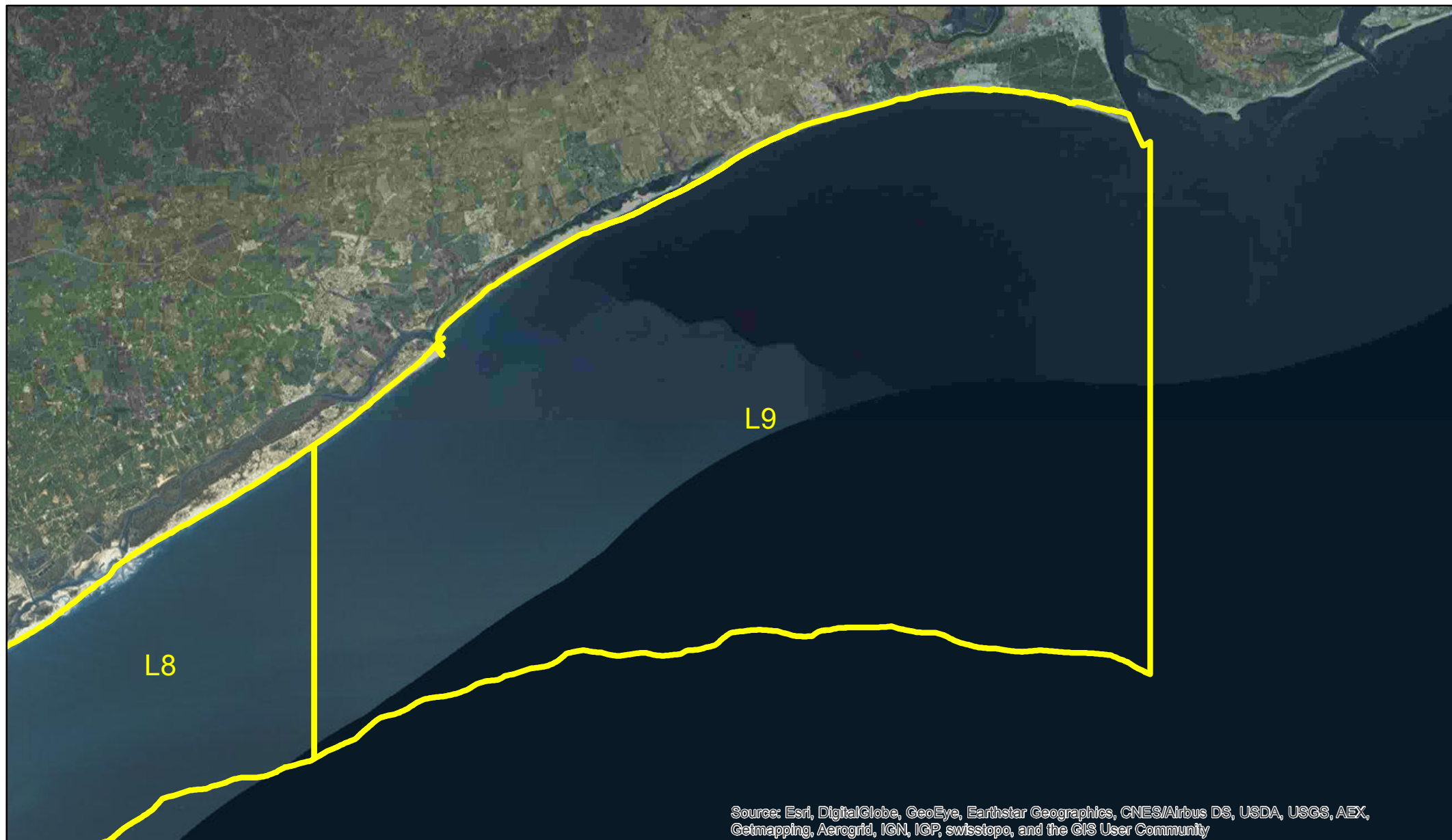
## L8 : Litoral Faro - Olhão



Source: Esri, DigitalGlobe, GeoEye, Earthstar Geographics, CNES/Airbus DS, USDA, USGS, AEX, Getmapping, Aerogrid, IGN, IGP, swisstopo, and the GIS User Community



## L9 : Litoral Tavira - Vila Real de Santo António



Source: Esri, DigitalGlobe, GeoEye, Earthstar Geographics, CNES/Airbus DS, USDA, USGS, AEX, Getmapping, Aerogrid, IGN, IGP, swisstopo, and the GIS User Community

