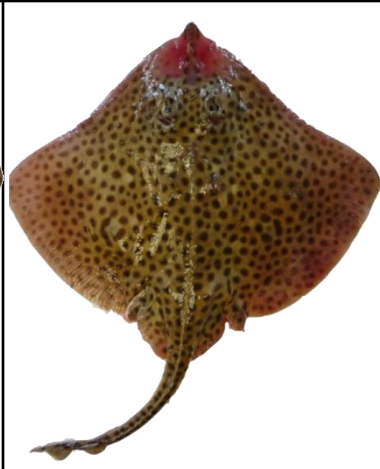


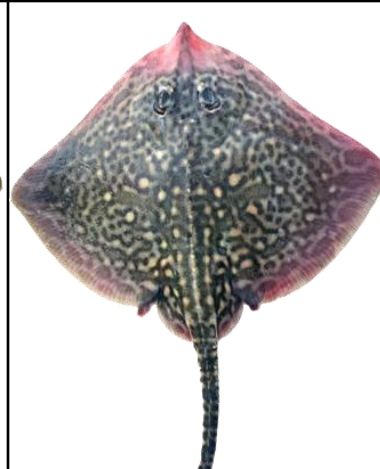
COMO DISTINGUIR AS RAIAS?



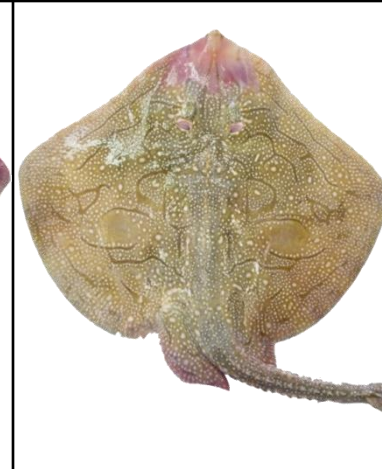
RJH *Raja brachyura*
659 Raia pontuada



RJM *Raja montagui*
665 Raia manchada



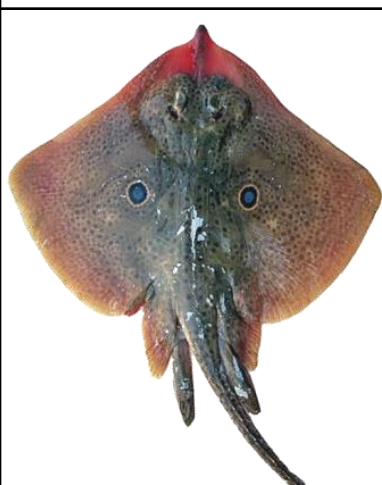
RJC *Raja clavata*
651 Raia lenga



RJU *Raja undulata*
--- Raia curva



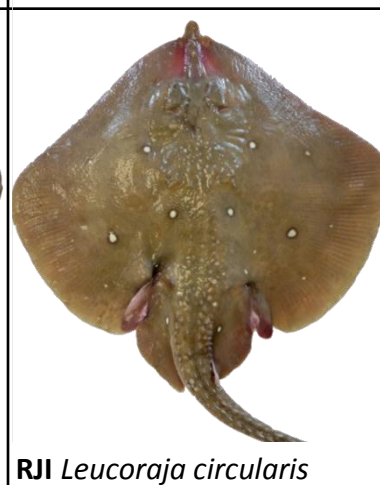
RJE *Raja microocellata*
--- Raia zimbreira



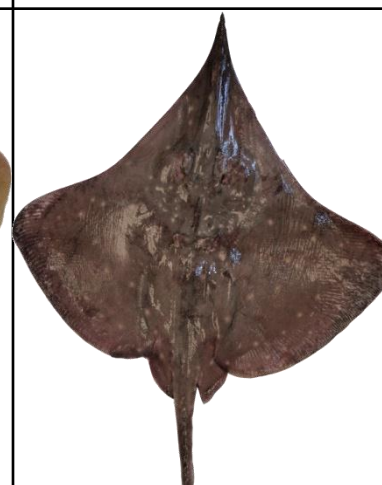
JAI *Raja miraletus*
642 Raia-de-quatro-olhos



RJN *Leucoraja naevus*
666 Raia-de-dois-olhos
Raia de S. Pedro



RJI *Leucoraja circularis*
655 Raia santiaga,
Raia de S. Pedro

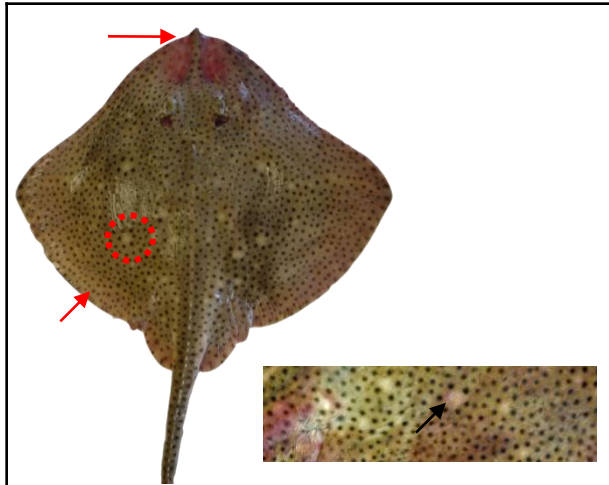


RJO *Dipturus oxyrinchus*
644 Raia bicuda

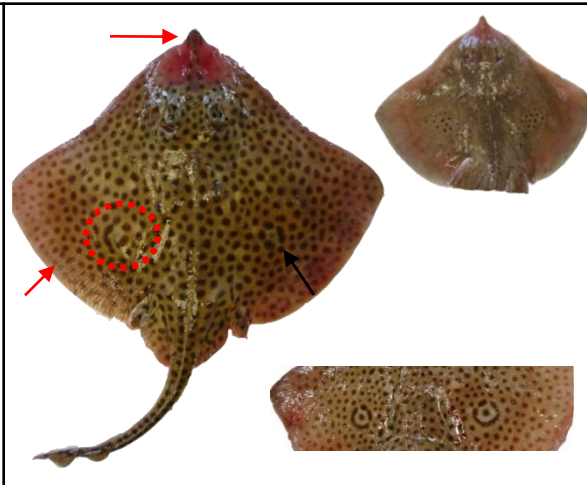


RJA *Rostroraja alba*
--- Raia tairoga

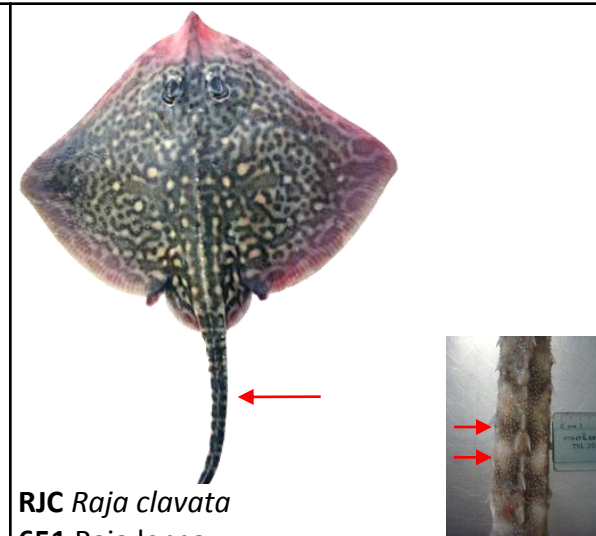
COMO DISTINGUIR AS RAIAS?



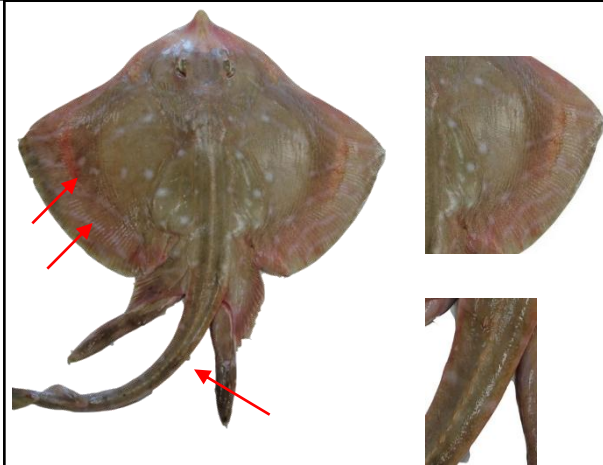
RJH *Raja brachyura*
 659 Raia pontuada



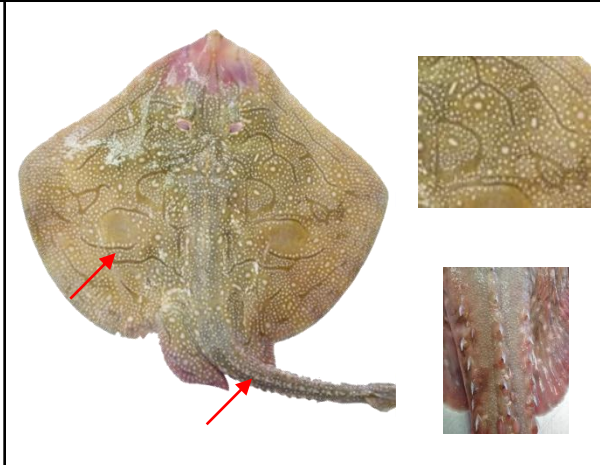
RJM *Raja montagui*
 665 Raia manchada



RJC *Raja clavata*
 651 Raia longa

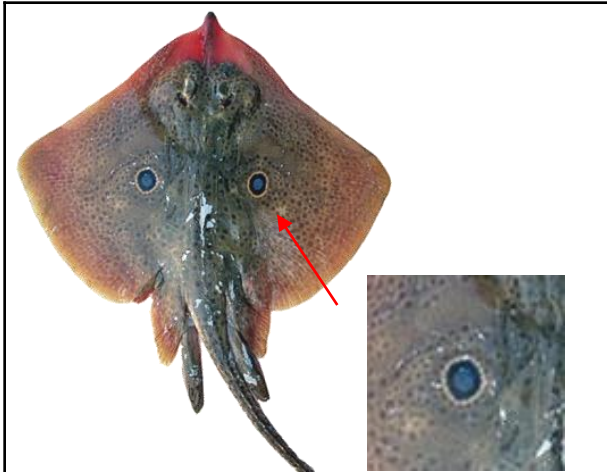


RJE *Raja microcellata*
 - - - Raia zimbreira

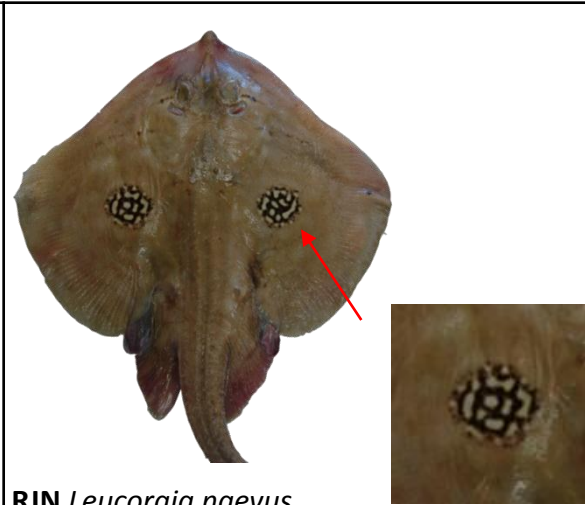


RJU *Raja undulata*
 - - - Raia curva

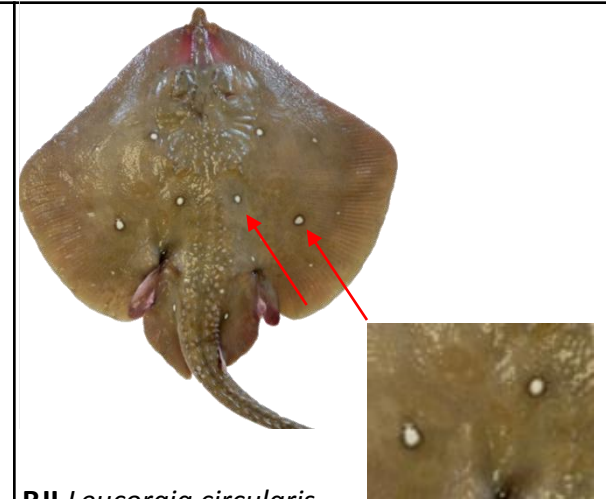
COMO DISTINGUIR AS RAIAS?



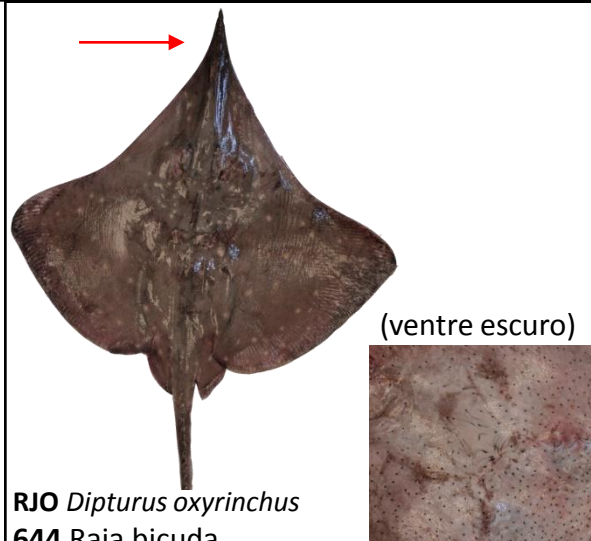
JAI *Raja miraletus*
642 Raia-de-quatro-olhos



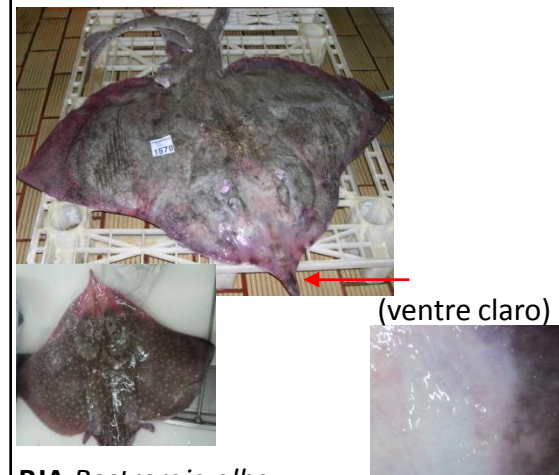
RJN *Leucoraja naevus*
666 Raia-de-dois-olhos Raia de S. Pedro



RJI *Leucoraja circularis*
655 Raia santiaga, Raia de S. Pedro



RJO *Dipturus oxyrinchus*
644 Raia bicuda



RJA *Rostroraja alba*
 --- Raia tairoga